

Water Resources Planning Department

**Projection Analysis Work Sheets
for
Los Altos Suburban District**

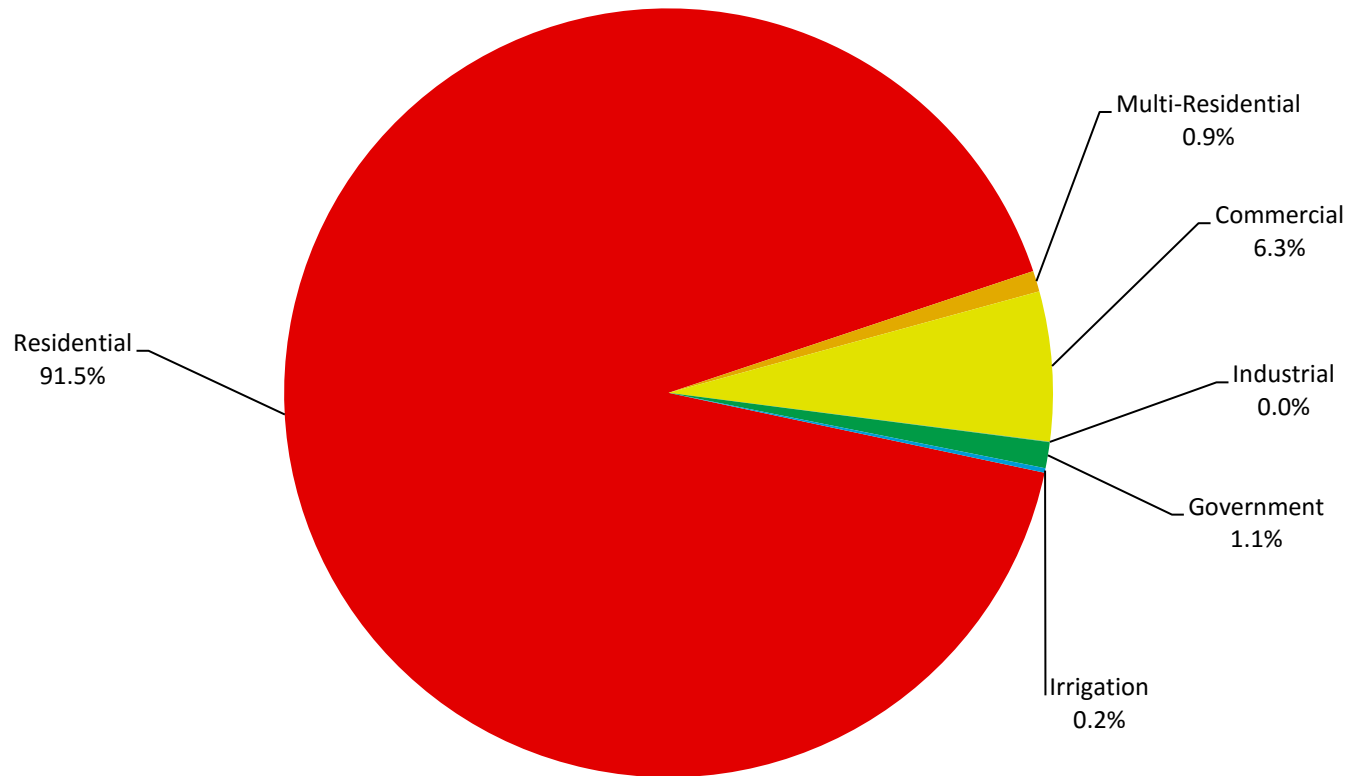
2015



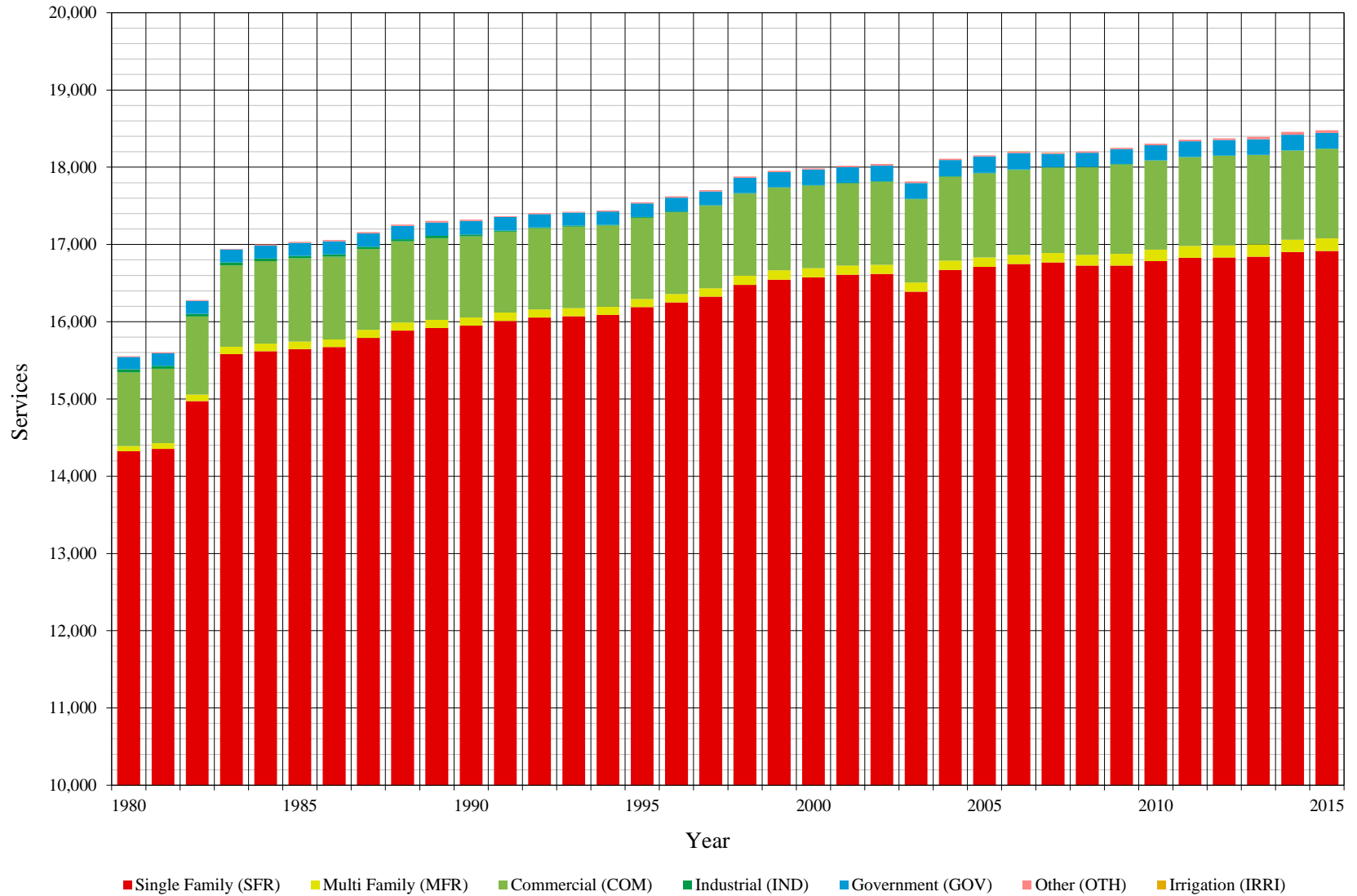
Table of Contents for Worksheets

Worksheet	Title
1	Annual Services
2	Service Growth Percentage
3	District Sales (AF)
4	Demand per Service (Gallons per Day)
5	Percentage Change in Annual Demand
6	Percentage of Total Sales
7	Percentage of Total Demand
8	Actual & Projected Annual Average Services
9	Actual & Projected Demand in Acre-Feet
10	Projected Annual Supply by Source
11	Historical and Projected Average Day, Maximum Day, and Peak Demands
12	Population Estimate
13	Temperature & Rainfall History
14	Groundwater Facilities (if available)
15	Per Capita Water Demand Calculation
16	Indoor/Outdoor Water Usage
17	SB-7 Compliance Demand Worksheet

Distribution of Services (2015)



Historical Services



California Water Service Company - Los Altos Suburban District
Water Supply and Demand Analysis and Projections
Average Annual Services

Year	Single Family (SFR)	Multi Family (MFR)	Commercial (COM)	Industrial (IND)	Government (GOV)	Other (OTH)	Irrigation (IRRI)	Total	Annual Change
1980	14,323	67	954	40	160	12	0	15,556	
1981	14,355	72	964	39	161	12	0	15,603	47
1982	14,971	86	1,010	35	166	12	0	16,282	679
1983	15,581	96	1,055	35	169	9	0	16,944	662
1984	15,618	97	1,070	34	168	14	0	17,001	57
1985	15,645	99	1,076	32	169	13	0	17,034	34
1986	15,672	99	1,072	30	170	14	0	17,057	23
1987	15,790	105	1,048	29	171	16	0	17,159	102
1988	15,884	106	1,050	29	173	17	0	17,259	101
1989	15,920	105	1,057	29	175	17	0	17,304	44
1990	15,951	105	1,049	26	176	14	0	17,321	17
1991	16,012	105	1,049	16	173	12	0	17,366	46
1992	16,053	105	1,052	11	173	11	0	17,405	39
1993	16,071	105	1,056	11	171	10	0	17,425	20
1994	16,087	105	1,053	10	174	13	0	17,441	16
1995	16,189	105	1,050	10	177	13	0	17,545	104
1996	16,252	107	1,059	9	178	16	0	17,622	77
1997	16,325	109	1,067	8	178	15	0	17,702	80
1998	16,479	117	1,063	8	195	19	0	17,881	178
1999	16,546	119	1,068	8	196	17	0	17,954	74
2000	16,575	119	1,068	7	200	15	0	17,984	30
2001	16,607	119	1,065	7	203	18	0	18,018	34
2002	16,618	119	1,074	7	203	21	0	18,042	24
2003	16,388	119	1,079	7	205	19	0	17,816	-226
2004	16,671	119	1,086	7	209	19	0	18,110	25
2005	16,711	119	1,092	7	211	13	0	18,153	336
2006	16,748	119	1,098	7	213	16	1	18,203	92
2007	16,769	119	1,106	7	174	13	1	18,189	36
2008	16,728	136	1,134	5	185	14	0	18,203	0
2009	16,729	150	1,157	5	195	16	0	18,252	63
2010	16,784	149	1,151	5	198	19	0	18,306	104
2011	16,829	151	1,150	4	201	21	0	18,356	104
2012	16,831	156	1,159	4	203	21	0	18,375	68
2013	16,841	159	1,156	4	203	29	0	18,392	37
2014	16,903	159	1,152	4	203	35	0	18,458	83
2015	16,915	162	1,161	4	203	35	0	18,479	87
5 Yr Avg.	16,864	157	1,156	4	203	28		18,412	79
10 Yr Avg.	16,808	146	1,142	5	198	22		18,321	103
15 Yr Avg.	16,738	137	1,121	6	201	21		18,223	80
20 Yr Avg.	16,662	131	1,107	6	198	20		18,125	86

Note: Reclassification occurred between categories from 2007 to 2009

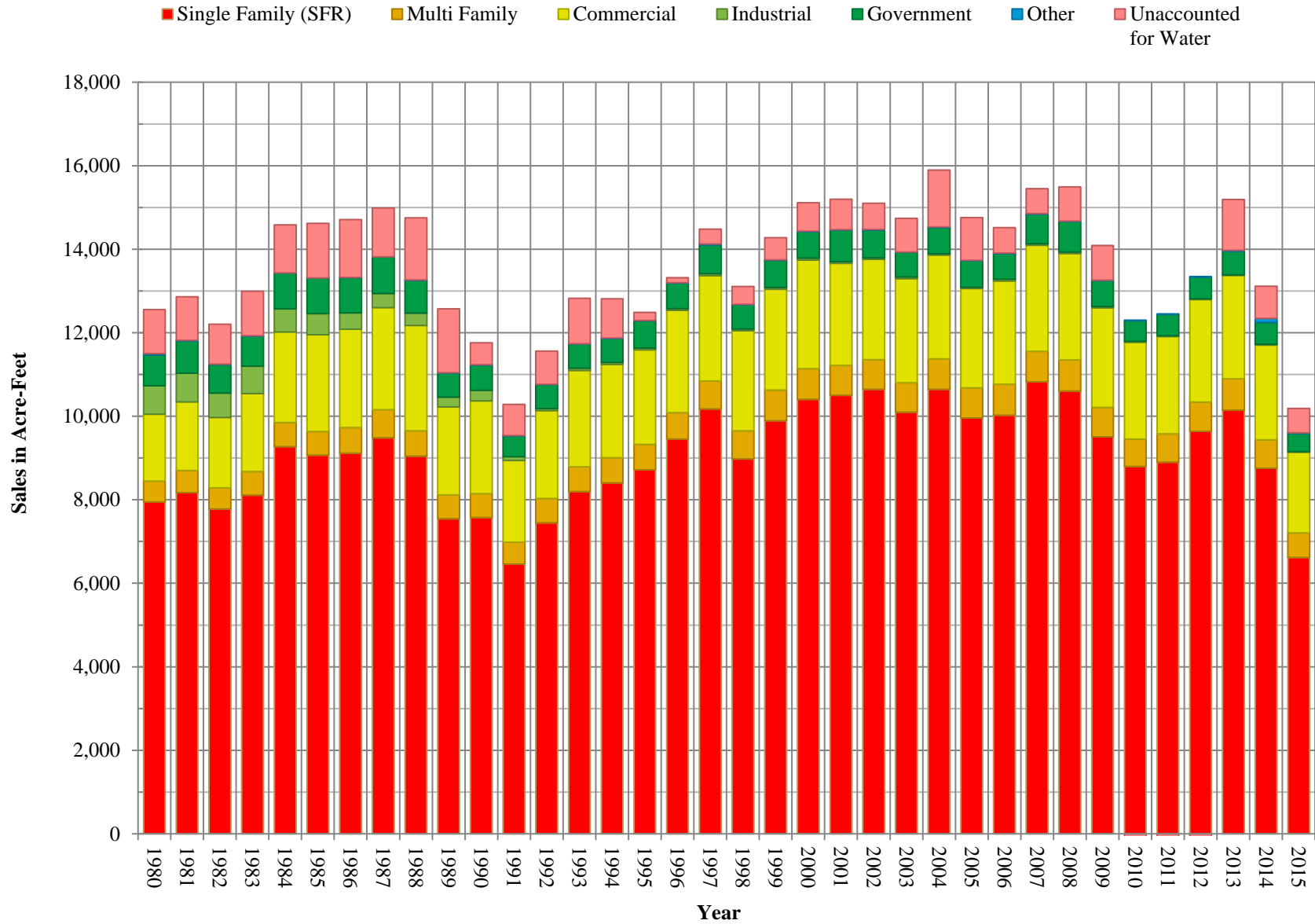
California Water Service Company - Los Altos Suburban District
Water Supply and Demand Analysis and Projections
Service Growth Percentage

Year	Single Family (SFR)	Multi Family (MFR)	Commercial (COM)	Industrial (IND)	Government (GOV)	Other (OTH)	Irrigation (IRRI)	Total
1981	0.23%	6.82%	1.07%	-3.31%	0.68%	1.42%		0.30%
1982	4.29%	20.33%	4.83%	-9.21%	3.21%	4.20%		4.35%
1983	4.07%	11.10%	4.40%	-0.24%	1.50%	-30.87%		4.07%
1984	0.24%	0.70%	1.42%	-4.02%	-0.49%	63.11%		0.33%
1985	0.17%	2.33%	0.59%	-6.40%	0.55%	-4.76%		0.20%
1986	0.17%	0.17%	-0.37%	-5.00%	0.44%	8.12%		0.13%
1987	0.75%	5.56%	-2.29%	-3.60%	0.98%	13.87%		0.60%
1988	0.60%	1.36%	0.21%	0.00%	0.78%	6.09%		0.59%
1989	0.22%	-0.47%	0.71%	0.00%	1.35%	-1.91%		0.26%
1990	0.19%	-0.08%	-0.78%	-10.63%	0.29%	-16.10%		0.10%
1991	0.38%	-0.24%	-0.02%	-39.23%	-1.38%	-19.19%		0.26%
1992	0.26%	0.00%	0.32%	-29.63%	-0.29%	-7.19%		0.22%
1993	0.11%	0.16%	0.38%	-0.75%	-0.82%	-4.65%		0.11%
1994	0.10%	-0.16%	-0.36%	-6.82%	1.51%	21.95%		0.09%
1995	0.64%	0.08%	-0.20%	-2.44%	1.97%	3.33%		0.60%
1996	0.39%	1.58%	0.86%	-7.50%	0.61%	27.10%		0.44%
1997	0.45%	1.79%	0.75%	-11.71%	-0.09%	-10.15%		0.46%
1998	0.94%	7.89%	-0.45%	-2.04%	9.45%	30.51%		1.01%
1999	0.41%	1.35%	0.55%	0.00%	0.38%	-11.69%		0.41%
2000	0.18%	0.07%	0.00%	-13.54%	2.09%	-14.71%		0.17%
2001	0.19%	-0.07%	-0.35%	1.20%	1.46%	22.41%		0.19%
2002	0.06%	0.07%	0.92%	0.00%	0.29%	18.31%		0.13%
2003	-1.38%	0.00%	0.40%	-1.19%	0.74%	-7.94%		-1.25%
2004	1.73%	0.00%	0.67%	1.20%	1.87%	-1.29%		1.65%
2005	0.24%	0.00%	0.53%	0.00%	1.16%	-32.75%		0.23%
2006	0.22%	0.00%	0.63%	-1.19%	0.87%	27.92%		0.28%
2007	0.12%	0.00%	0.64%	-1.20%	-18.17%	-18.78%		-0.08%
2008	-0.24%	14.15%	2.57%	-21.95%	6.46%	4.37%		0.08%
2009	0.00%	10.61%	2.01%	-6.25%	5.03%	17.37%		0.27%
2010	0.33%	-0.55%	-0.50%	0.00%	1.45%	18.37%		0.30%
2011	0.27%	0.89%	-0.08%	-11.67%	1.69%	6.03%		0.27%
2012	0.01%	3.70%	0.77%	-9.43%	1.08%	4.47%		0.10%
2013	0.06%	1.65%	-0.26%	0.00%	0.16%	35.80%		0.10%
2014	0.37%	0.05%	-0.30%	0.00%	0.00%	21.78%		0.36%
2015	0.07%	1.89%	0.70%	0.00%	-0.45%	-1.41%		0.12%
5 Yr. Avg.	0.16%	1.64%	0.17%	-4.22%	0.50%	13.33%		0.17%
10 Yr. Avg.	0.12%	0.95%	0.20%	-5.17%	-0.19%	11.59%		0.19%
15 Yr. Avg.	0.14%	0.59%	0.29%	-3.37%	0.24%	7.64%		0.27%
20 Yr. Avg.	0.22%	1.13%	0.30%	-4.26%	0.80%	6.79%		0.28%

Note: Values in red excluded due reclassification

PAGE LEFT BLANK INTENTIONALLY

Historical Sales

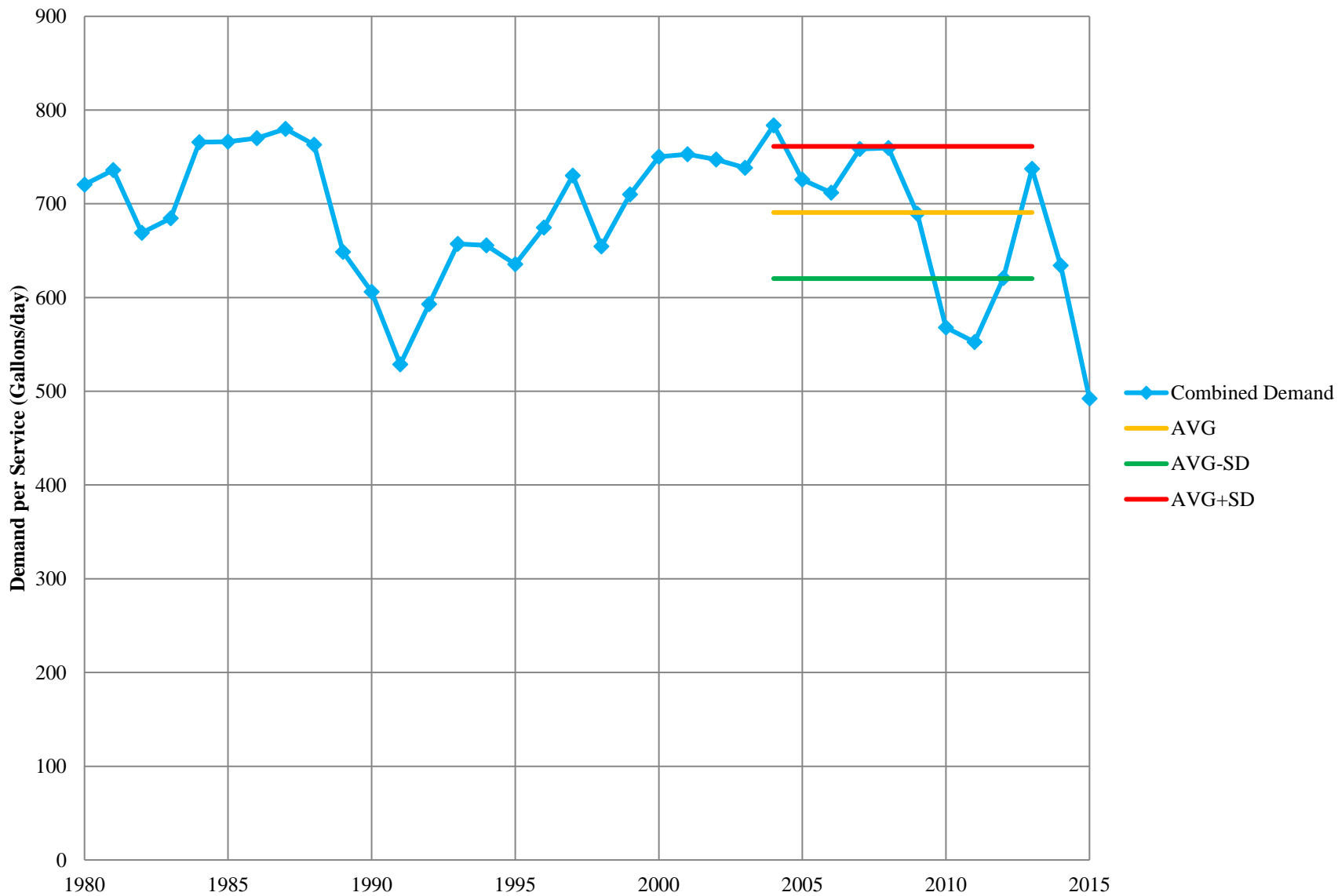


California Water Service Company - Los Altos Suburban District
Water Supply and Demand Analysis and Projections
Sales (AF)

Worksheet 3

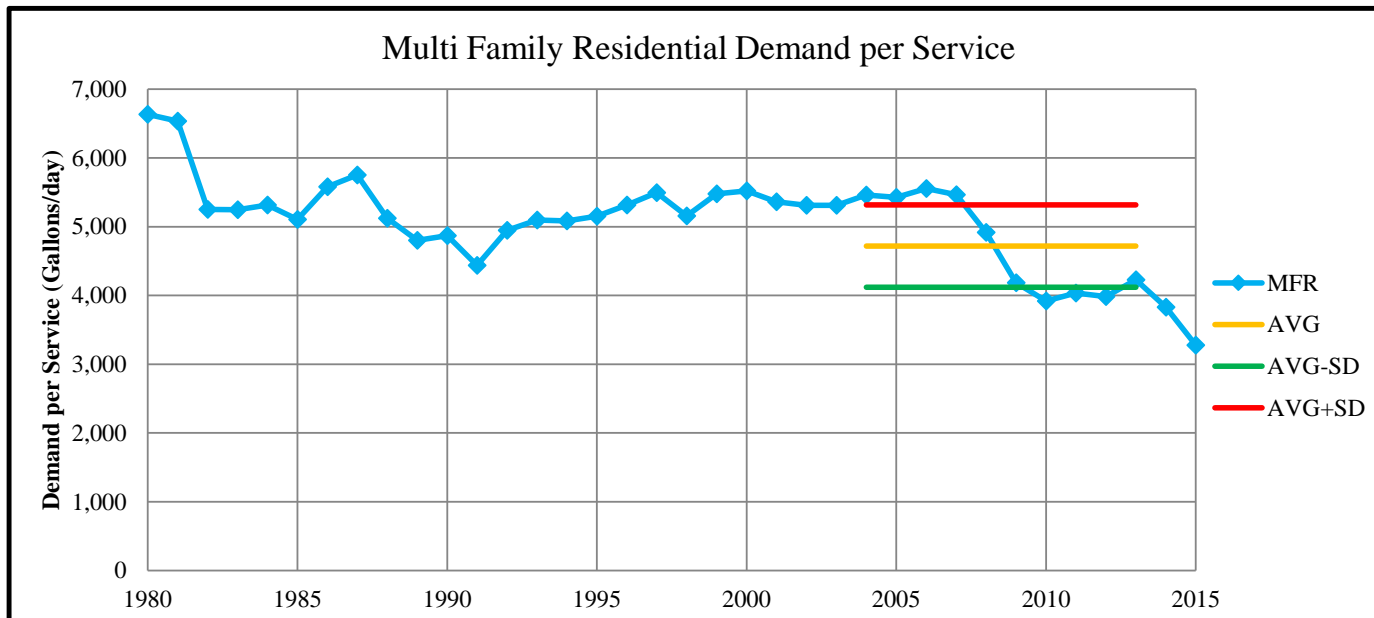
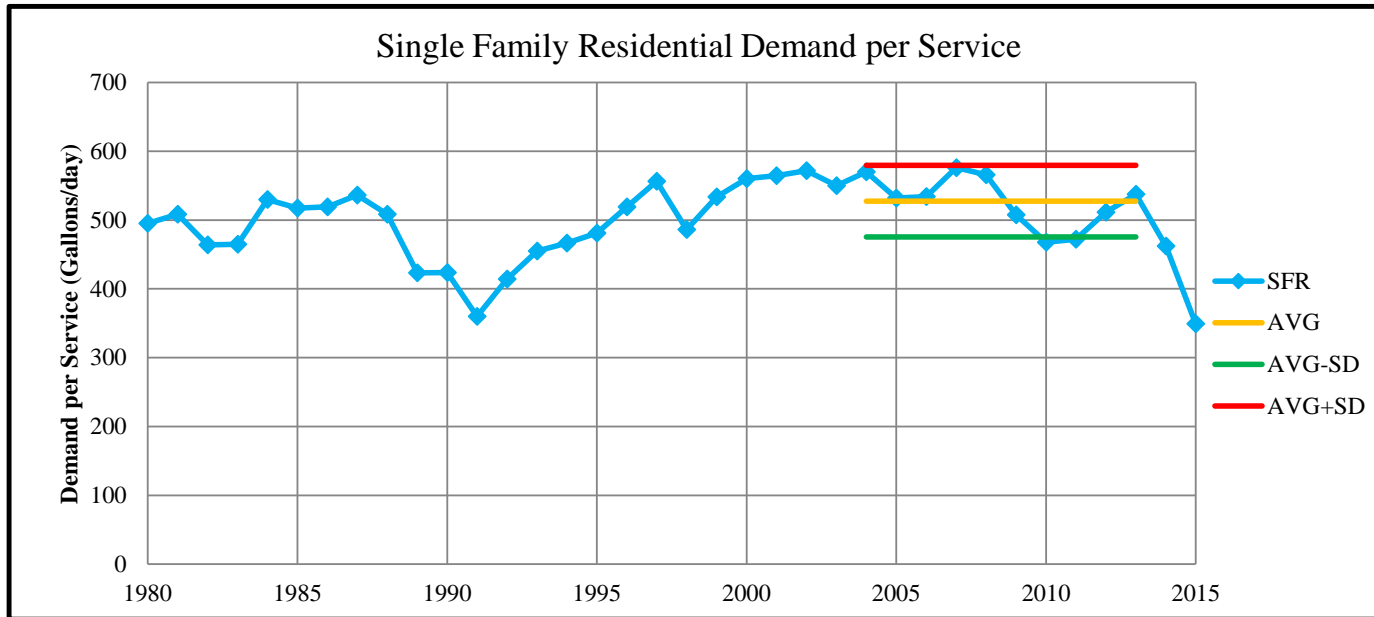
Year	Single Family (SFR)	Multi Family (MFR)	Commercial (COM)	Industrial (IND)	Government (GOV)	Other (OTH)	Irrigation (IRRI)	Unaccounted for Water (UAFW)	Total Sales (AF)	Total Demand (AF)	Total Demand (MGal)
1980	7,946	499	1,603	682	742	28	0	1,056	11,500	12,556	4,091
1981	8,173	525	1,648	683	775	13	0	1,046	11,817	12,862	4,191
1982	7,779	508	1,683	586	678	11	0	958	11,245	12,203	3,976
1983	8,111	564	1,867	656	723	7	0	1,067	11,928	12,995	4,234
1984	9,273	575	2,170	558	855	6	0	1,146	13,436	14,582	4,751
1985	9,069	565	2,316	507	853	5	0	1,304	13,316	14,619	4,764
1986	9,113	619	2,353	394	838	6	0	1,388	13,322	14,710	4,793
1987	9,486	673	2,443	338	875	6	0	1,166	13,821	14,988	4,884
1988	9,046	608	2,521	293	790	8	0	1,488	13,265	14,753	4,807
1989	7,547	567	2,112	235	574	5	0	1,531	11,041	12,571	4,096
1990	7,572	574	2,221	254	604	8	0	527	11,234	11,760	3,832
1991	6,460	522	1,957	90	499	10	0	744	9,538	10,282	3,350
1992	7,448	582	2,101	47	581	4	0	799	10,764	11,563	3,768
1993	8,192	601	2,304	56	574	6	0	1,092	11,734	12,826	4,179
1994	8,408	599	2,237	46	571	15	0	934	11,876	12,810	4,174
1995	8,721	607	2,261	43	651	12	0	194	12,294	12,488	4,069
1996	9,452	636	2,449	41	610	13	0	118	13,201	13,319	4,340
1997	10,174	669	2,521	48	689	24	0	354	14,125	14,479	4,718
1998	8,976	678	2,395	41	587	4	0	430	12,680	13,110	4,272
1999	9,895	730	2,417	44	650	12	0	531	13,747	14,278	4,652
2000	10,405	736	2,600	49	634	10	0	678	14,433	15,111	4,924
2001	10,500	714	2,447	43	753	12	0	726	14,470	15,196	4,952
2002	10,645	708	2,407	32	667	15	0	630	14,474	15,104	4,922
2003	10,097	708	2,490	40	592	8	0	805	13,934	14,738	4,803
2004	10,643	728	2,489	31	627	14	0	1,365	14,533	15,898	5,180
2005	9,958	723	2,376	35	632	12	0	1,021	13,737	14,758	4,809
2006	10,024	741	2,477	40	616	12	3	605	13,913	14,518	4,731
2007	10,824	729	2,544	36	705	16	0	597	14,854	15,451	5,035
2008	10,603	748	2,547	33	729	15	0	815	14,675	15,490	5,047
2009	9,509	704	2,385	29	617	14	0	834	13,258	14,092	4,592
2010	8,797	656	2,318	22	499	10	0	-654	12,302	11,648	3,795
2011	8,899	681	2,329	20	509	10	0	-1,091	12,449	11,358	3,701
2012	9,640	698	2,457	17	517	14	0	-565	13,344	12,779	4,164
2013	10,144	753	2,475	15	565	23	0	1,218	13,975	15,192	4,950
2014	8,756	682	2,267	18	525	97	0	768	12,344	13,112	4,272
2015	6,615	595	1,930	11	436	16	0	585	9,603	10,188	3,320

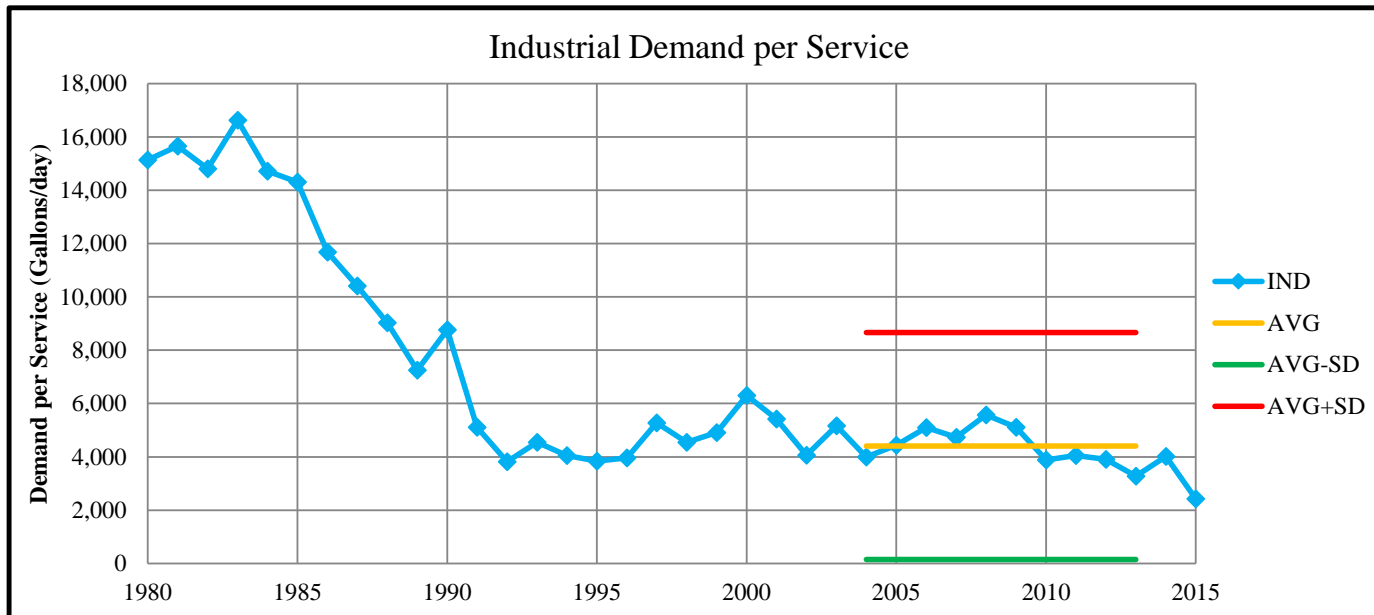
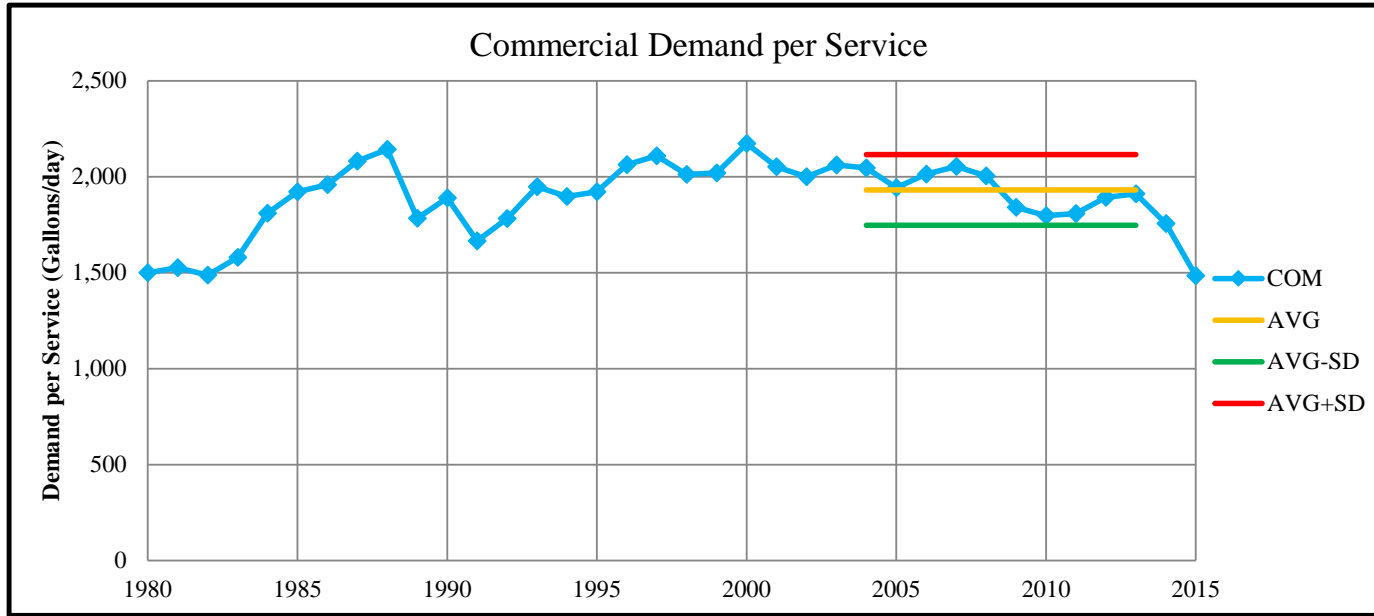
Combined Demand per Service

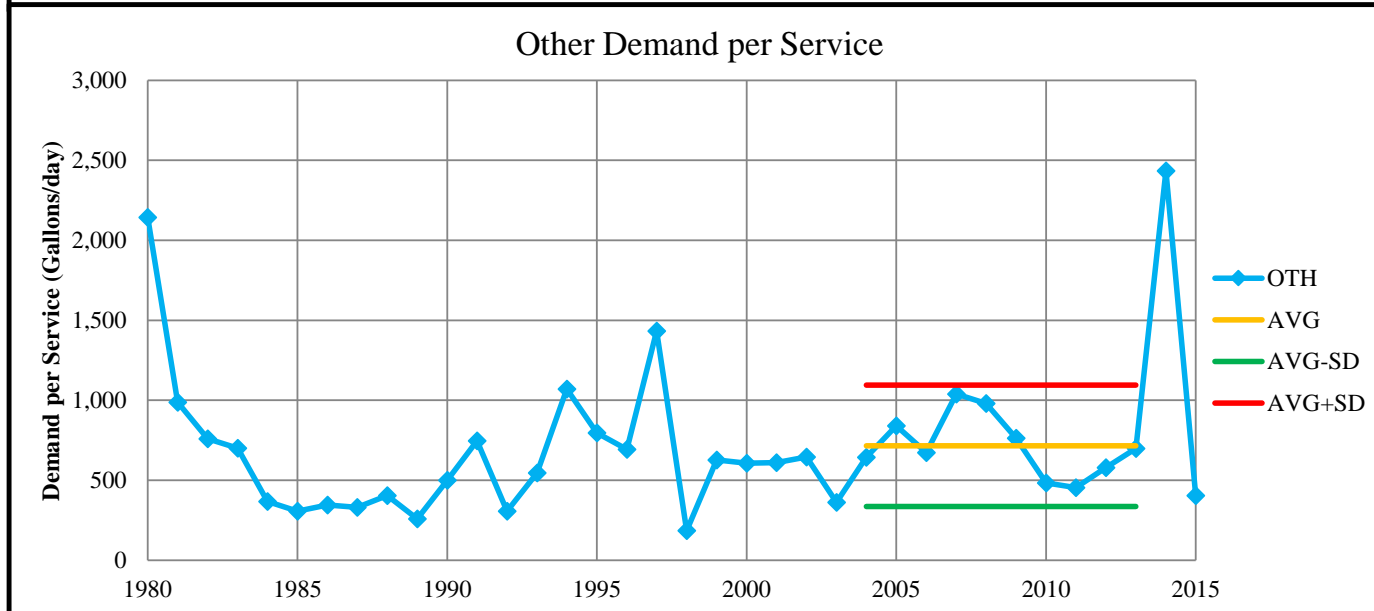
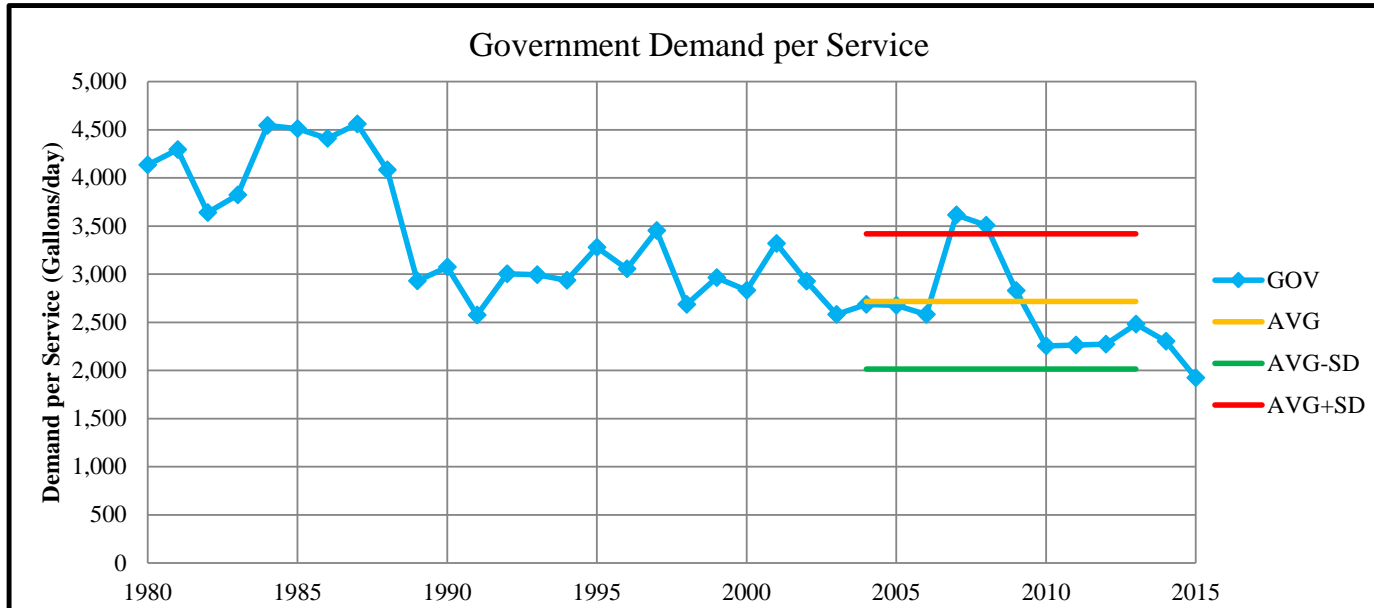


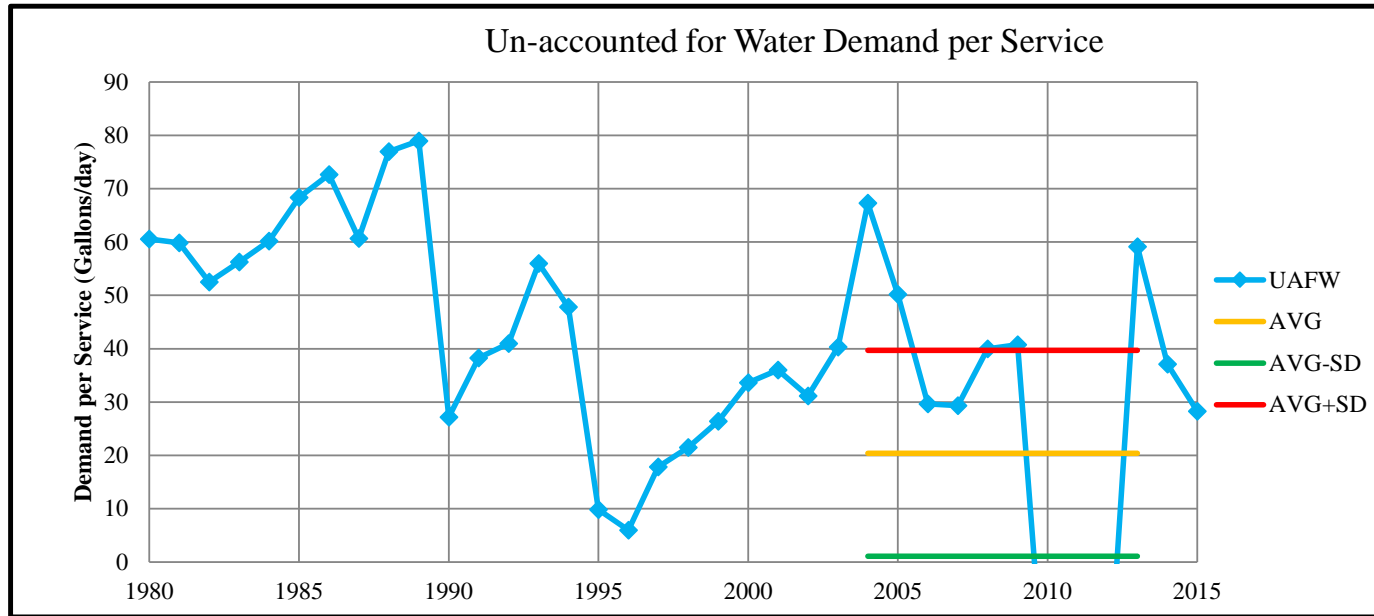
California Water Service Company - Los Altos Suburban District
Water Supply and Demand Analysis and Projections
Demand per Service (Gallons per Day)

Year	SFR	MFR	COM	IND	GOV	OTH	UAFW	Combined Demand/Serv
1980	495	6,633	1,500	15,136	4,136	2,143	61	721
1981	508	6,534	1,527	15,659	4,293	988	60	736
1982	464	5,251	1,487	14,801	3,640	759	53	669
1983	465	5,246	1,580	16,624	3,824	701	56	685
1984	530	5,314	1,810	14,719	4,546	367	60	766
1985	517	5,107	1,921	14,307	4,510	308	68	766
1986	519	5,579	1,959	11,686	4,410	346	73	770
1987	536	5,753	2,081	10,411	4,560	331	61	780
1988	508	5,123	2,143	9,030	4,082	404	77	763
1989	423	4,803	1,783	7,248	2,929	259	79	649
1990	424	4,868	1,890	8,762	3,074	500	27	606
1991	360	4,437	1,665	5,115	2,575	746	38	529
1992	414	4,945	1,783	3,821	3,004	308	41	593
1993	455	5,096	1,948	4,552	2,995	547	56	657
1994	467	5,085	1,897	4,046	2,936	1,071	48	656
1995	481	5,154	1,922	3,843	3,280	797	10	635
1996	519	5,314	2,064	3,961	3,056	693	6	675
1997	556	5,494	2,109	5,272	3,454	1,434	18	730
1998	486	5,159	2,012	4,552	2,687	185	21	655
1999	534	5,479	2,019	4,912	2,965	626	26	710
2000	560	5,519	2,173	6,298	2,833	607	34	750
2001	564	5,361	2,052	5,423	3,318	610	36	753
2002	572	5,313	2,000	4,063	2,928	646	31	747
2003	550	5,310	2,061	5,161	2,580	362	40	739
2004	570	5,459	2,047	3,994	2,686	644	67	784
2005	532	5,427	1,944	4,438	2,675	841	50	726
2006	534	5,556	2,013	5,105	2,583	674	30	712
2007	576	5,466	2,054	4,737	3,614	1,040	29	758
2008	566	4,918	2,005	5,573	3,508	980	40	760
2009	507	4,185	1,840	5,113	2,830	763	41	689
2010	468	3,922	1,798	3,882	2,254	485	-32	568
2011	472	4,034	1,808	4,048	2,262	454	-53	552
2012	511	3,985	1,893	3,904	2,274	579	-27	621
2013	538	4,230	1,912	3,272	2,480	698	59	737
2014	462	3,828	1,756	4,013	2,302	2,435	37	634
2015	349	3,278	1,485	2,427	1,923	405	28	492
10-yr AVG	527	4,718	1,931	4,407	2,717	716	20	691
SD	52	599	184	4,257	702	379	19	71







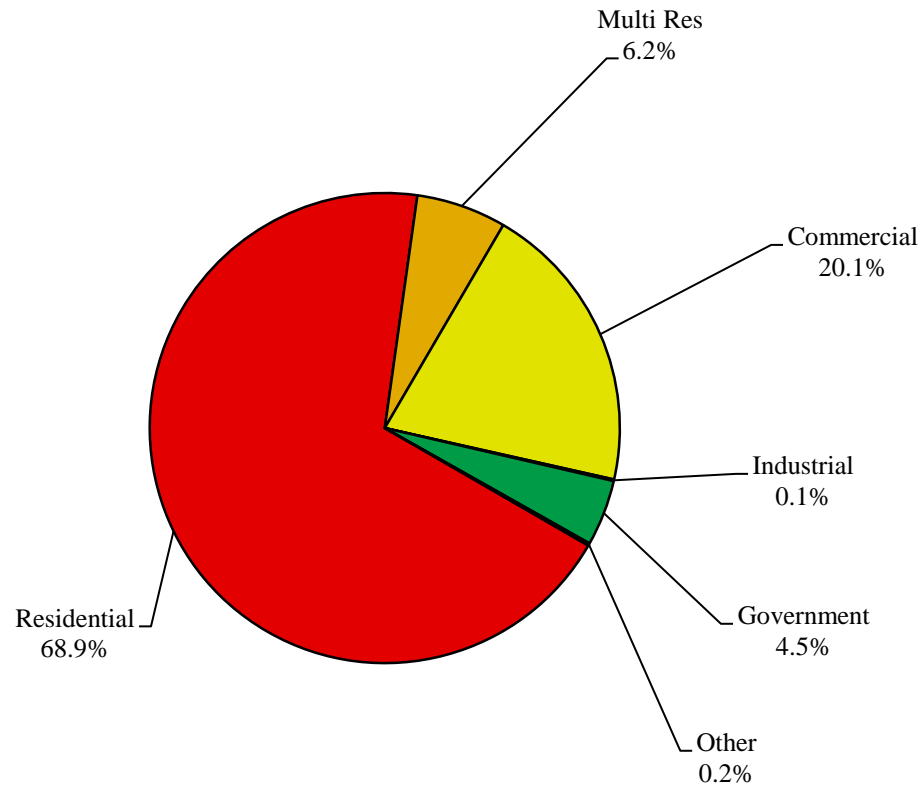


California Water Service Company - Los Altos Suburban District
Water Supply and Demand Analysis and Projections
Percentage Change in Annual Demand

Year	Residential	Multi Res	Commercial	Industrial	Government	Other	Unaccounted	Total
1981	2.85%	5.22%	2.84%	0.02%	4.49%	-53.25%	-0.94%	2.75%
1982	-4.81%	-3.30%	2.13%	-14.18%	-12.48%	-19.93%	-8.40%	-4.84%
1983	4.27%	10.99%	10.90%	12.05%	6.63%	-36.15%	11.42%	6.07%
1984	14.32%	2.00%	16.22%	-15.02%	18.28%	-14.61%	7.32%	12.64%
1985	-2.20%	-1.65%	6.74%	-9.02%	-0.24%	-20.22%	13.83%	-0.90%
1986	0.49%	9.42%	1.60%	-22.40%	-1.78%	21.49%	6.44%	0.05%
1987	4.10%	8.85%	3.81%	-14.12%	4.41%	8.93%	-15.97%	3.75%
1988	-4.64%	-9.75%	3.20%	-13.26%	-9.77%	29.65%	27.57%	-4.03%
1989	-16.57%	-6.68%	-16.22%	-19.73%	-27.28%	-37.05%	2.87%	-16.77%
1990	0.32%	1.28%	5.17%	8.04%	5.25%	61.96%	-65.59%	1.75%
1991	-14.68%	-9.07%	-11.90%	-64.53%	-17.38%	20.54%	41.32%	-15.09%
1992	15.30%	11.45%	7.40%	-47.43%	16.30%	-61.74%	7.35%	12.85%
1993	9.99%	3.22%	9.65%	18.25%	-1.10%	69.39%	36.70%	9.01%
1994	2.64%	-0.38%	-2.93%	-17.19%	-0.49%	139.03%	-14.46%	1.21%
1995	3.72%	1.44%	1.08%	-7.33%	13.89%	-23.18%	-79.28%	3.52%
1996	8.38%	4.74%	8.31%	-4.65%	-6.26%	10.54%	-38.89%	7.37%
1997	7.64%	5.24%	2.95%	17.49%	12.94%	85.96%	199.52%	7.00%
1998	-11.77%	1.30%	-5.01%	-15.41%	-14.87%	-83.17%	21.54%	-10.23%
1999	10.24%	7.64%	0.91%	7.92%	10.77%	199.14%	23.35%	8.41%
2000	5.16%	0.82%	7.61%	10.84%	-2.45%	-17.38%	27.62%	5.00%
2001	0.92%	-2.94%	-5.89%	-12.84%	18.85%	23.11%	7.16%	0.25%
2002	1.38%	-0.83%	-1.63%	-25.09%	-11.50%	25.20%	-13.31%	0.03%
2003	-5.15%	-0.06%	3.42%	25.51%	-11.24%	-48.36%	27.79%	-3.73%
2004	5.42%	2.82%	-0.02%	-21.68%	6.04%	75.56%	69.64%	4.30%
2005	-6.44%	-0.59%	-4.54%	11.13%	0.77%	-12.20%	-25.20%	-5.48%
2006	0.67%	2.38%	4.24%	13.66%	-2.62%	2.49%	-40.74%	1.28%
2007	7.98%	-1.62%	2.68%	-8.33%	14.51%	25.31%	-1.25%	6.76%
2008	-2.05%	2.69%	0.14%	-8.17%	3.32%	-1.64%	36.40%	-1.20%
2009	-10.31%	-5.86%	-6.38%	-13.98%	-15.26%	-8.64%	2.29%	-9.66%
2010	-7.49%	-6.82%	-2.80%	-24.09%	-19.20%	-24.78%	-178.50%	-7.21%
2011	1.16%	3.78%	0.50%	-7.88%	2.08%	-0.66%	66.76%	1.20%
2012	8.32%	2.45%	5.50%	-12.65%	1.59%	33.22%	-48.23%	7.18%
2013	5.23%	7.89%	0.72%	-16.18%	9.24%	63.74%	-315.55%	4.73%
2014	-13.68%	-9.45%	-8.40%	22.64%	-7.17%	324.62%	-36.95%	-11.67%
2015	-24.45%	-12.75%	-14.86%	-39.54%	-16.85%	-83.58%	-23.76%	-22.20%

PAGE LEFT BLANK INTENTIONALLY

Percent of Total Sales by Type of Use (2015)



California Water Service Company - Los Altos Suburban District

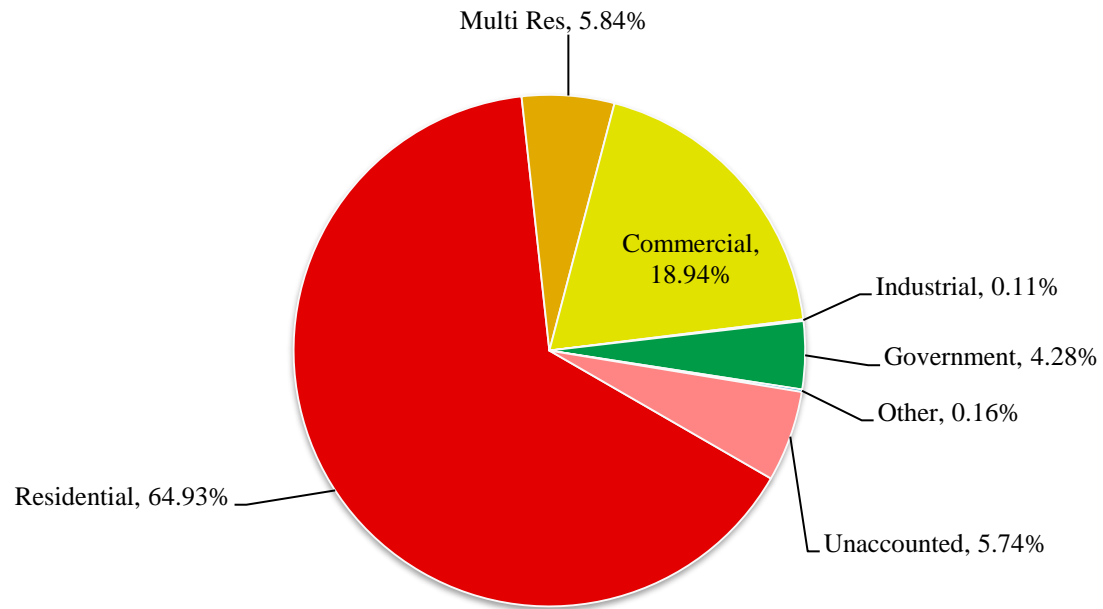
Water Supply and Demand Analysis and Projections

Worksheet 6

Percentage of Total Sales

Year	Residential	Multi Res	Commercial	Industrial	Government	Other	Percent Total
1980	69.10%	4.34%	13.93%	5.93%	6.45%	0.25%	100.00%
1981	69.16%	4.44%	13.95%	5.78%	6.56%	0.11%	100.00%
1982	69.18%	4.52%	14.97%	5.21%	6.03%	0.09%	100.00%
1983	68.00%	4.72%	15.65%	5.50%	6.06%	0.06%	100.00%
1984	69.01%	4.28%	16.15%	4.15%	6.37%	0.04%	100.00%
1985	68.11%	4.25%	17.39%	3.81%	6.41%	0.03%	100.00%
1986	68.40%	4.64%	17.66%	2.96%	6.29%	0.04%	100.00%
1987	68.63%	4.87%	17.67%	2.45%	6.33%	0.04%	100.00%
1988	68.19%	4.58%	19.00%	2.21%	5.95%	0.06%	100.00%
1989	68.36%	5.14%	19.13%	2.13%	5.20%	0.04%	100.00%
1990	67.40%	5.11%	19.77%	2.26%	5.38%	0.07%	100.00%
1991	67.73%	5.48%	20.51%	0.95%	5.24%	0.10%	100.00%
1992	69.20%	5.41%	19.52%	0.44%	5.40%	0.03%	100.00%
1993	69.82%	5.12%	19.64%	0.48%	4.89%	0.05%	100.00%
1994	70.80%	5.04%	18.83%	0.39%	4.81%	0.13%	100.00%
1995	70.93%	4.94%	18.39%	0.35%	5.29%	0.09%	100.00%
1996	71.60%	4.82%	18.55%	0.31%	4.62%	0.10%	100.00%
1997	72.03%	4.74%	17.85%	0.34%	4.88%	0.17%	100.00%
1998	70.79%	5.35%	18.89%	0.32%	4.63%	0.03%	100.00%
1999	71.98%	5.31%	17.58%	0.32%	4.73%	0.09%	100.00%
2000	72.09%	5.10%	18.02%	0.34%	4.39%	0.07%	100.00%
2001	72.57%	4.94%	16.91%	0.29%	5.21%	0.08%	100.00%
2002	73.54%	4.89%	16.63%	0.22%	4.61%	0.10%	100.00%
2003	72.46%	5.08%	17.87%	0.29%	4.25%	0.06%	100.00%
2004	73.24%	5.01%	17.13%	0.22%	4.32%	0.09%	100.00%
2005	72.49%	5.27%	17.30%	0.25%	4.60%	0.09%	100.00%
2006	72.05%	5.32%	17.81%	0.28%	4.43%	0.09%	100.00%
2007	72.87%	4.91%	17.13%	0.24%	4.75%	0.10%	100.00%
2008	72.25%	5.10%	17.36%	0.23%	4.96%	0.10%	100.00%
2009	71.72%	5.31%	17.99%	0.22%	4.66%	0.11%	100.00%
2010	71.51%	5.34%	18.84%	0.18%	4.05%	0.09%	100.00%
2011	71.48%	5.47%	18.71%	0.16%	4.09%	0.08%	100.00%
2012	72.24%	5.23%	18.42%	0.13%	3.88%	0.10%	100.00%
2013	72.59%	5.39%	17.71%	0.10%	4.04%	0.16%	100.00%
2014	70.93%	5.52%	18.37%	0.15%	4.25%	0.78%	100.00%
2015	68.89%	6.19%	20.10%	0.11%	4.54%	0.17%	100.00%

Percent of Total Demand by Type of Use (2015)

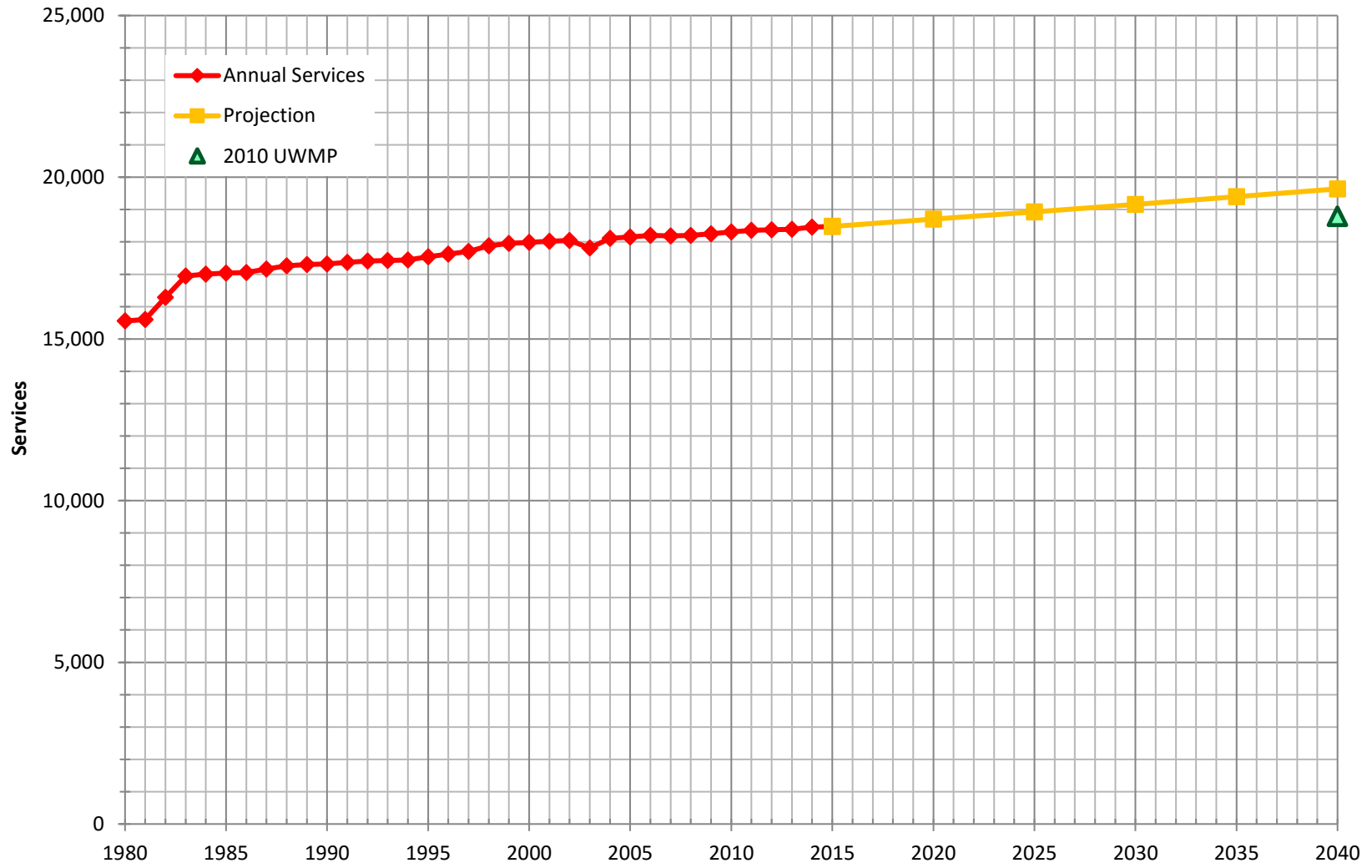


California Water Service Company - Los Altos Suburban District
Water Supply and Demand Analysis and Projections
Percentage of Total Demand

Worksheet 7

Year	Residential	Multi Res	Commercial	Industrial	Government	Other	Unaccounted	Percent Total
1980	63.29%	3.97%	12.76%	5.44%	5.91%	0.22%	8.41%	100.00%
1981	63.54%	4.08%	12.81%	5.31%	6.03%	0.10%	8.13%	100.00%
1982	63.75%	4.16%	13.79%	4.80%	5.56%	0.09%	7.85%	100.00%
1983	62.42%	4.34%	14.37%	5.05%	5.57%	0.05%	8.21%	100.00%
1984	63.59%	3.94%	14.88%	3.83%	5.87%	0.04%	7.86%	100.00%
1985	62.03%	3.87%	15.84%	3.47%	5.84%	0.03%	8.92%	100.00%
1986	61.95%	4.21%	16.00%	2.68%	5.70%	0.04%	9.44%	100.00%
1987	63.29%	4.49%	16.30%	2.26%	5.84%	0.04%	7.78%	100.00%
1988	61.32%	4.12%	17.09%	1.99%	5.35%	0.05%	10.09%	100.00%
1989	60.03%	4.51%	16.80%	1.87%	4.57%	0.04%	12.18%	100.00%
1990	64.38%	4.88%	18.89%	2.16%	5.14%	0.07%	4.48%	100.00%
1991	62.82%	5.08%	19.03%	0.88%	4.86%	0.09%	7.24%	100.00%
1992	64.42%	5.03%	18.17%	0.41%	5.02%	0.03%	6.91%	100.00%
1993	63.87%	4.68%	17.97%	0.44%	4.48%	0.05%	8.52%	100.00%
1994	65.63%	4.67%	17.46%	0.36%	4.46%	0.12%	7.29%	100.00%
1995	69.83%	4.86%	18.10%	0.34%	5.21%	0.09%	1.55%	100.00%
1996	70.97%	4.77%	18.39%	0.31%	4.58%	0.10%	0.89%	100.00%
1997	70.26%	4.62%	17.41%	0.33%	4.76%	0.16%	2.45%	100.00%
1998	68.46%	5.17%	18.27%	0.31%	4.47%	0.03%	3.28%	100.00%
1999	69.30%	5.11%	16.93%	0.31%	4.55%	0.08%	3.72%	100.00%
2000	68.86%	4.87%	17.21%	0.32%	4.19%	0.07%	4.48%	100.00%
2001	69.10%	4.70%	16.10%	0.28%	4.96%	0.08%	4.78%	100.00%
2002	70.48%	4.69%	15.94%	0.21%	4.41%	0.10%	4.17%	100.00%
2003	68.51%	4.80%	16.89%	0.27%	4.02%	0.05%	5.46%	100.00%
2004	66.95%	4.58%	15.66%	0.20%	3.95%	0.09%	8.59%	100.00%
2005	67.47%	4.90%	16.10%	0.24%	4.28%	0.08%	6.92%	100.00%
2006	69.05%	5.10%	17.06%	0.27%	4.24%	0.09%	4.17%	100.00%
2007	70.06%	4.72%	16.46%	0.23%	4.56%	0.10%	3.87%	100.00%
2008	68.45%	4.83%	16.44%	0.21%	4.70%	0.10%	5.26%	100.00%
2009	67.48%	5.00%	16.92%	0.20%	4.38%	0.10%	5.92%	100.00%
2010	75.53%	5.63%	19.90%	0.19%	4.28%	0.09%	-5.62%	100.00%
2011	78.35%	6.00%	20.51%	0.18%	4.48%	0.09%	-9.61%	100.00%
2012	75.44%	5.46%	19.23%	0.14%	4.05%	0.11%	-4.42%	100.00%
2013	66.77%	4.96%	16.29%	0.10%	3.72%	0.15%	8.02%	100.00%
2014	66.78%	5.20%	17.29%	0.14%	4.00%	0.74%	5.86%	100.00%
2015	64.93%	5.84%	18.94%	0.11%	4.28%	0.16%	5.74%	100.00%

Historical & Projected Services



California Water Service Company - Los Altos Suburban District
Water Supply and Demand Analysis and Projections
Actual & Projected Annual Average Services

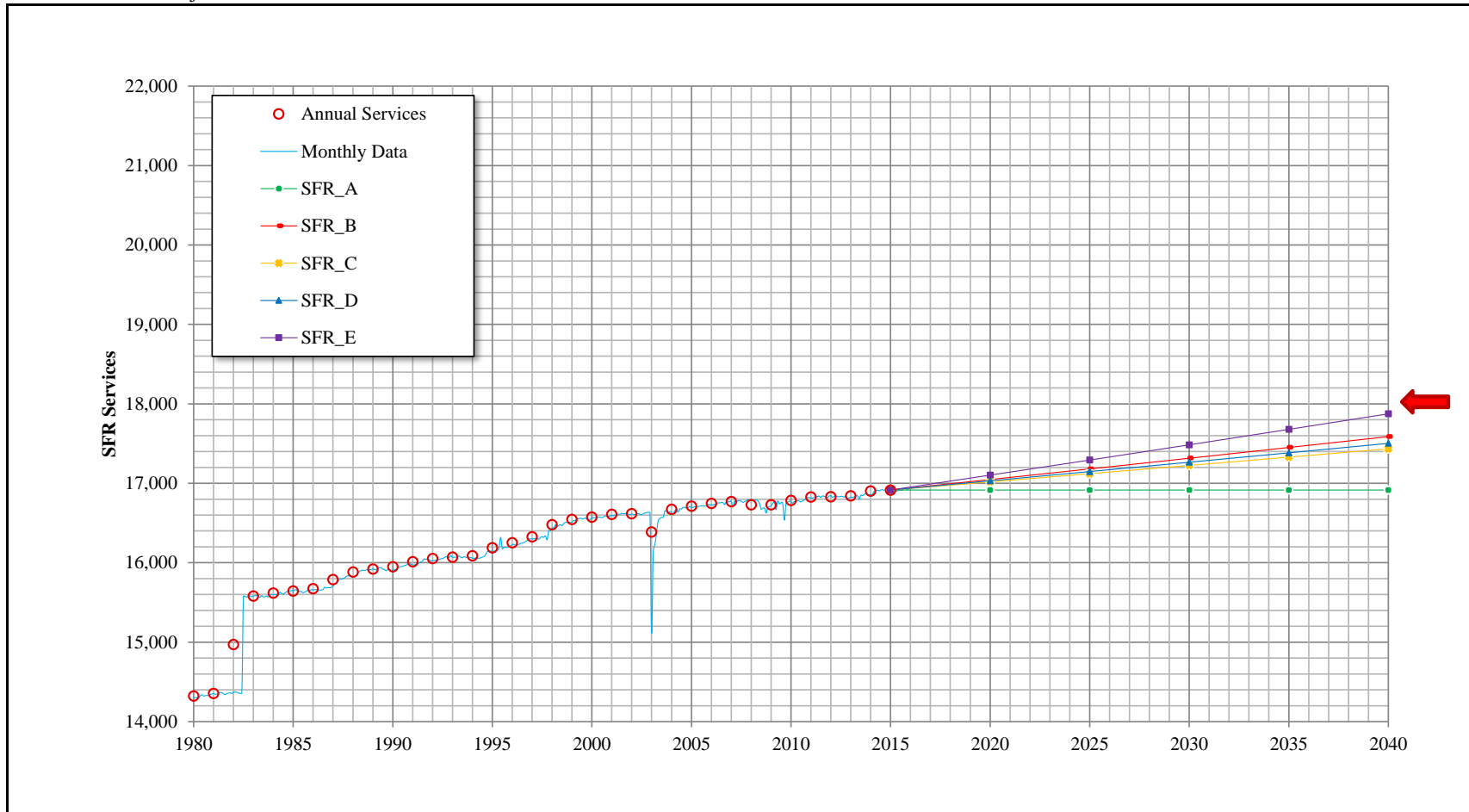
Customer Category	Selected Trend		Growth Rate	Actual Services				Projected Services						Total Increase from Base Year
				2000	2005	2010	Base Year 2015	2015	2020	2025	2030	2035	2040	
SFR	SFR_E	20 Yr. Avg.	0.22%	16,575	16,711	16,784	16,915	16,915	17,103	17,293	17,485	17,679	17,875	960
							Increase in services =	0	188	190	192	194	196	
MFR	MFR_E	User Defined = SCCEF	1.90%	119	119	149	162	162	178	196	215	236	259	97
							Increase in services =	0	16	18	19	21	23	
COM	COM_C	10 Yr. Avg.	0.20%	1,068	1,092	1,151	1,161	1,161	1,172	1,184	1,196	1,208	1,220	59
							Increase in services =	0	12	12	12	12	12	
IND	IND_A	Zero Growth Rate	0.00%	7	7	5	4	4	4	4	4	4	4	0
							Increase in services =	0	0	0	0	0	0	
GOV	GOV_E	20 Yr. Avg.	0.80%	200	211	198	203	203	211	219	228	238	247	45
							Increase in services =	0	8	9	9	9	10	
OTH	OTH_A	Zero Growth Rate	0.00%	15	13	19	35	35	35	35	35	35	35	0
							Increase in services =	0	0	0	0	0	0	
TOTAL	Average growth rate 2014-2040		#DIV/0!	17,984	18,153	18,306	18,479	18,479	18,703	18,931	19,163	19,399	19,641	1,161
Number of units in given yr =								9,565	10,508	11,545	12,685	13,936	15,312	
Increase in MFR units =								0	944	1,037	1,139	1,252	1,375	5,747
Percent of COM to Total				5.94%	6.01%	6.29%	6.28%	6.28%	6.27%	6.25%	6.24%	6.23%	6.21%	
Percent of GOV to Total				1.11%	1.16%	1.08%	1.10%	1.10%	1.13%	1.16%	1.19%	1.23%	1.26%	

Notes:

California Water Service Company - Los Altos Suburban District

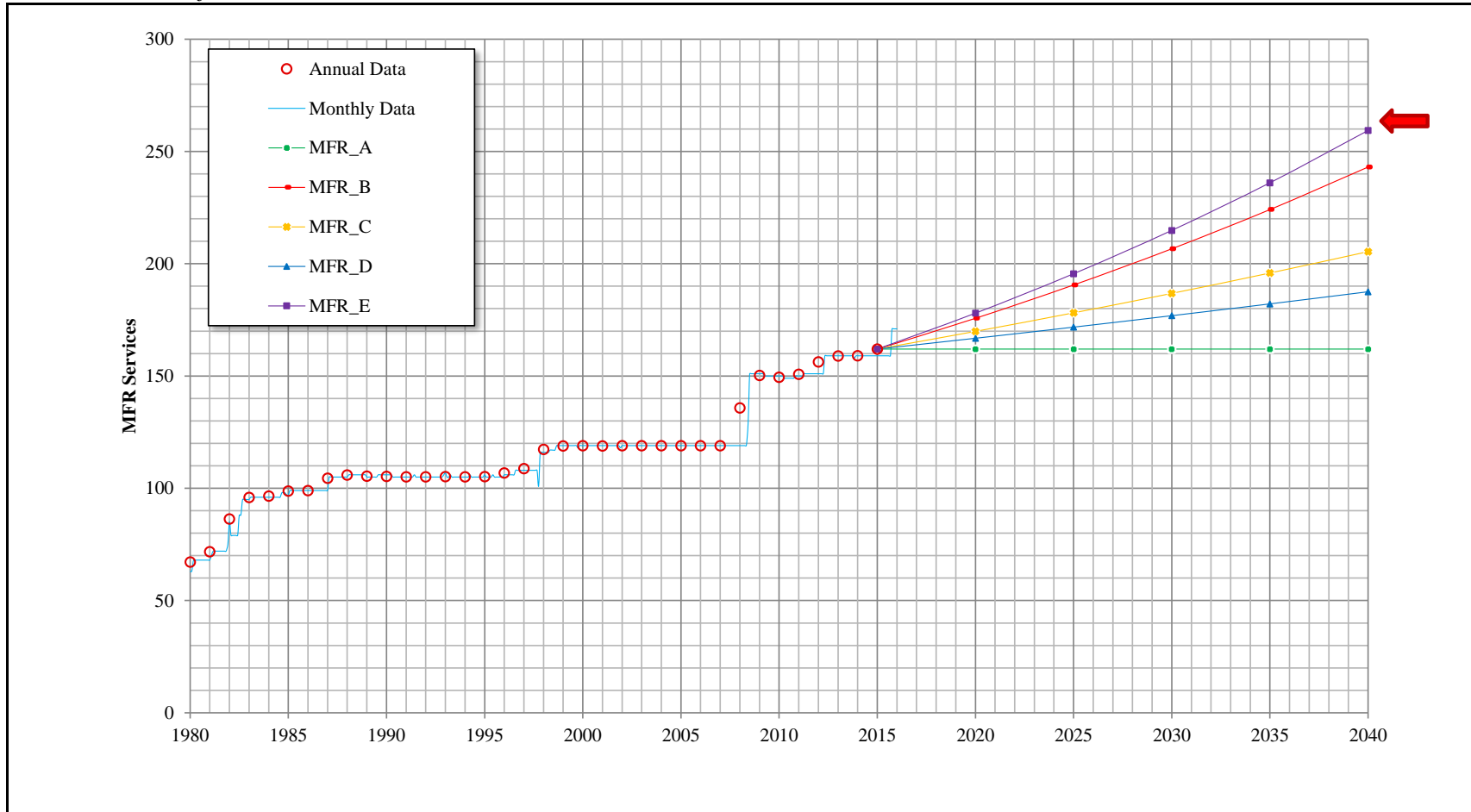
Water Supply and Demand Analysis and Projections

SFR Historical & Projected Services



Customer Category	Trend	Growth Rate	Actual				Projected					
			2000	2005	2010	Base Year 2015	Services 2015	Services 2020	Services 2025	Services 2030	Services 2035	Services 2040
SFR	SFR_A	Zero Growth Rate	16,575	16,711	16,784	16,915	16,915	16,915	16,915	16,915	16,915	16,915
	SFR_B	5 Yr. Avg.				16,915	16,915	17,048	17,181	17,315	17,451	17,587
	SFR_C	10 Yr. Avg.				16,915	16,915	17,018	17,121	17,225	17,329	17,434
	SFR_D	15 Yr. Avg.				16,915	16,915	17,031	17,148	17,265	17,384	17,503
	> SFR_E	20 Yr. Avg.				16,915	16,915	17,103	17,293	17,485	17,679	17,875

California Water Service Company - Los Altos Suburban District
Water Supply and Demand Analysis and Projections
 MFR Historical & Projected Services

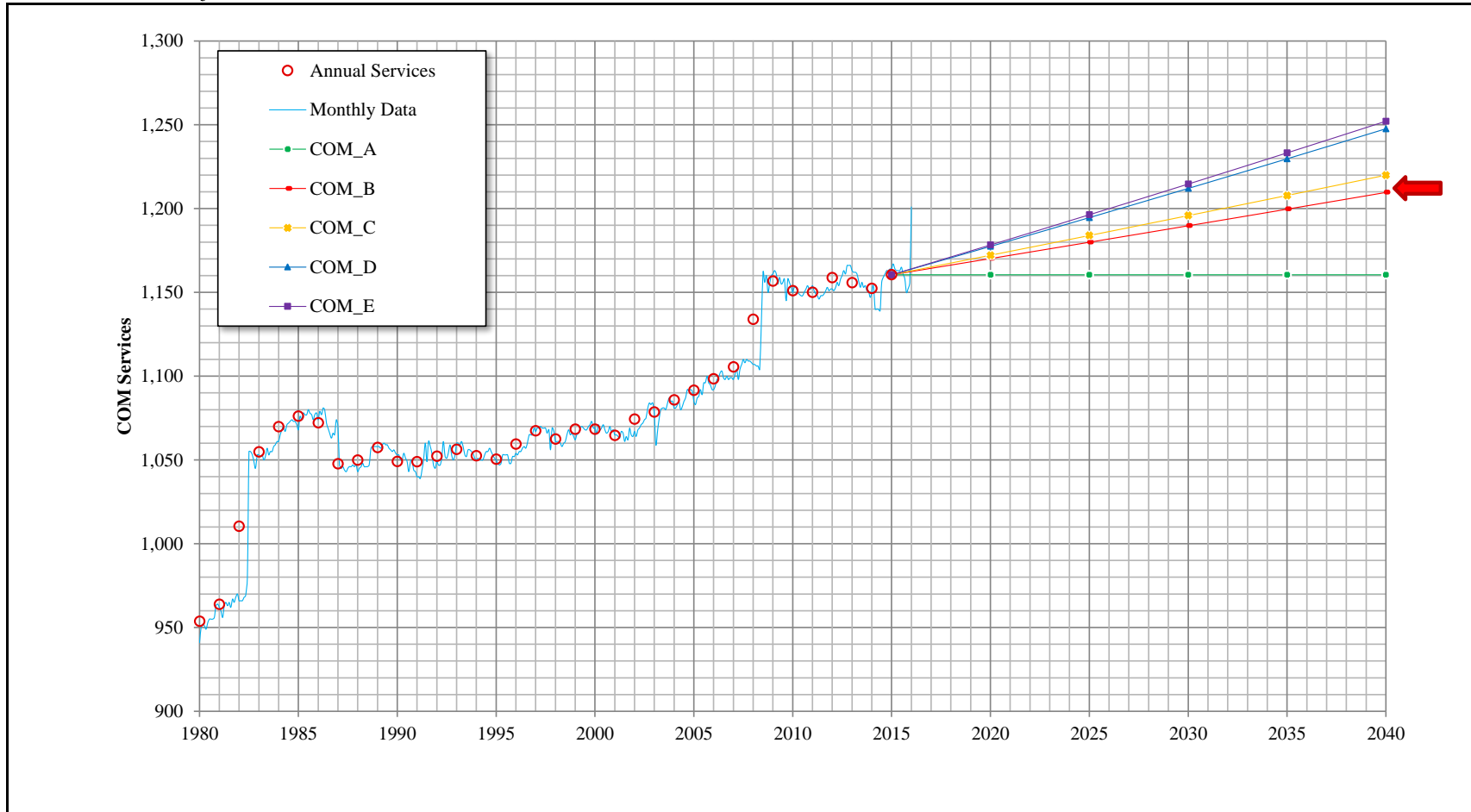


Customer Category	Trend	Growth Rate	Actual				Projected							
			2000	2005	2010	Base Year 2015	Services 2015	Services 2020	Services 2025	Services 2030	Services 2035	Services 2040		
MFR			119	119	149	162	162	162	162	162	162	162	162	162
	MFR_A	Zero Growth Rate				162	162	162	162	162	162	162	162	162
	MFR_B	5 Yr. Avg.			81	162	162	176	191	207	224	243		
	MFR_C	10 Yr. Avg.				43	162	170	178	187	196	205		
	MFR_D	15 Yr. Avg.				26	162	167	172	177	182	188		
	> MFR_E	User Defined = SCCEF				97	162	178	196	215	236	259		

California Water Service Company - Los Altos Suburban District

Water Supply and Demand Analysis and Projections

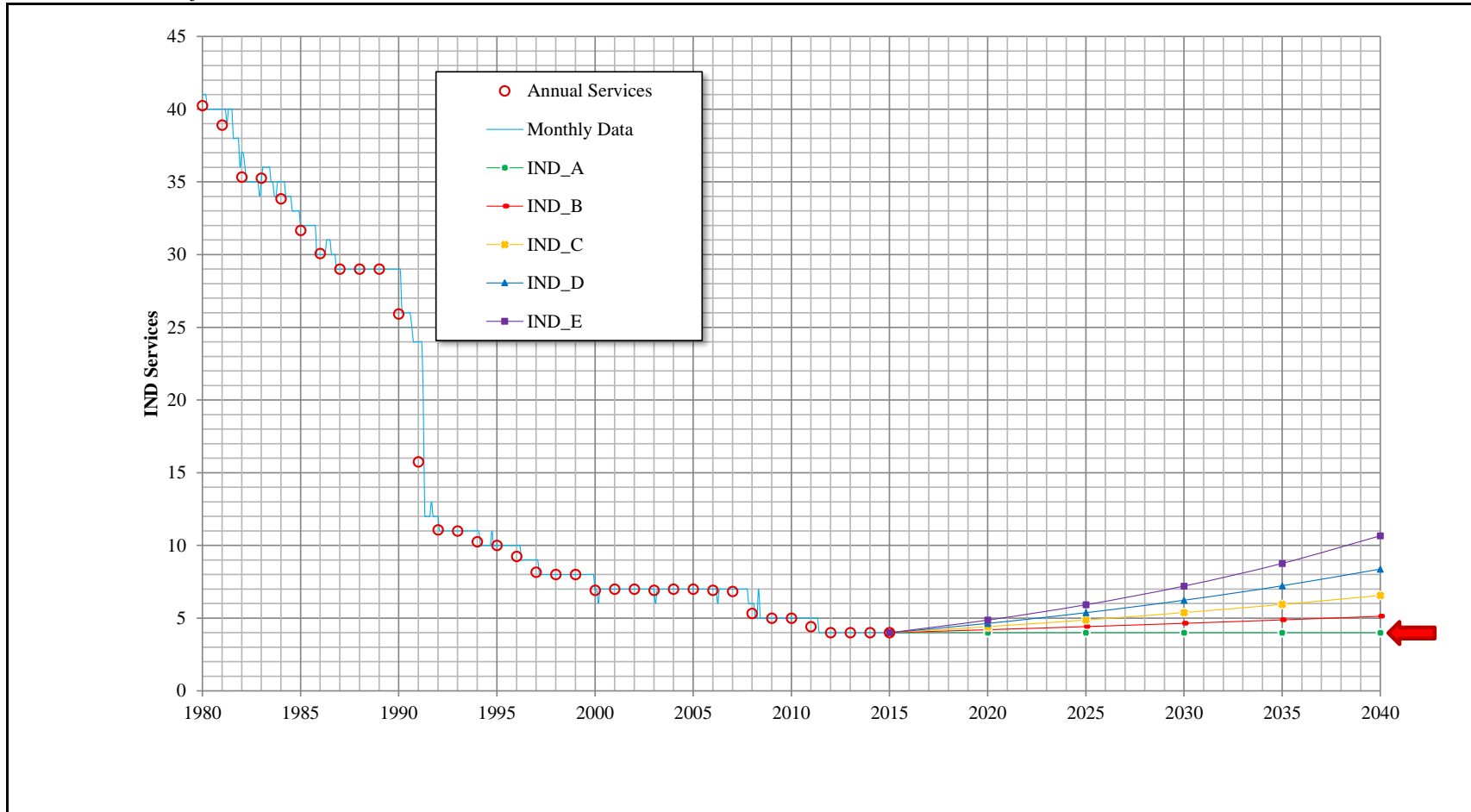
COM Historical & Projected Services



Customer Category	Trend	Growth Rate	Actual				Projected						
			2000	2005	2010	Base Year 2015	Services 2015	Services 2020	Services 2025	Services 2030	Services 2035	Services 2040	
COM			1,068	1,092	1,151	1,161	1,161	1,161	1,161	1,161	1,161	1,161	1,161
	COM_A	Zero Growth Rate				1,161	1,161	1,161	1,161	1,161	1,161	1,161	1,161
	COM_B	5 Yr. Avg.				1,161	1,161	1,170	1,180	1,190	1,200	1,210	1,210
	> COM_C	10 Yr. Avg.				1,161	1,161	1,172	1,184	1,196	1,208	1,220	1,220
	COM_D	15 Yr. Avg.				1,161	1,161	1,177	1,195	1,212	1,230	1,248	1,248
	COM_E	20 Yr. Avg.				1,161	1,161	1,178	1,196	1,215	1,233	1,252	1,252

California Water Service Company - Los Altos Suburban District Water Supply and Demand Analysis and Projections

IND Historical & Projected Services

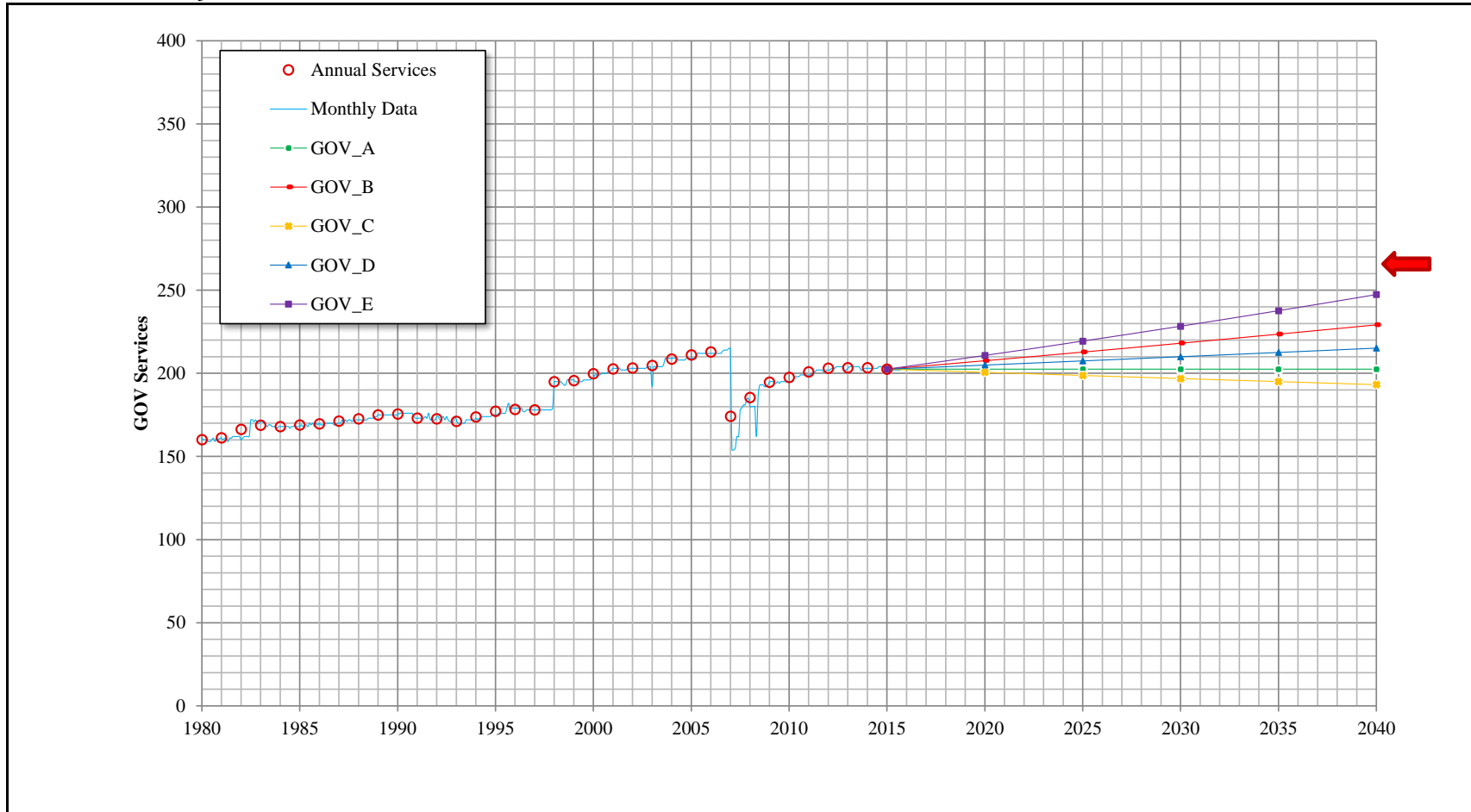


Customer Category	Trend	Growth Rate	Actual				Projected					
			2000	2005	2010	Base Year 2015	Services 2015	Services 2020	Services 2025	Services 2030	Services 2035	Services 2040
IND	> IND_A	Zero Growth Rate	7	7	5	4	4	4	4	4	4	4
	IND_B	1% growth rate				4	4	4	4	5	5	5
	IND_C	2% growth rate				4	4	4	5	5	6	7
	IND_D	3% growth rate				4	4	5	5	6	7	8
	IND_E	4% growth rate				4	4	5	6	7	9	11

California Water Service Company - Los Altos Suburban District

Water Supply and Demand Analysis and Projections

GOV Historical & Projected Services

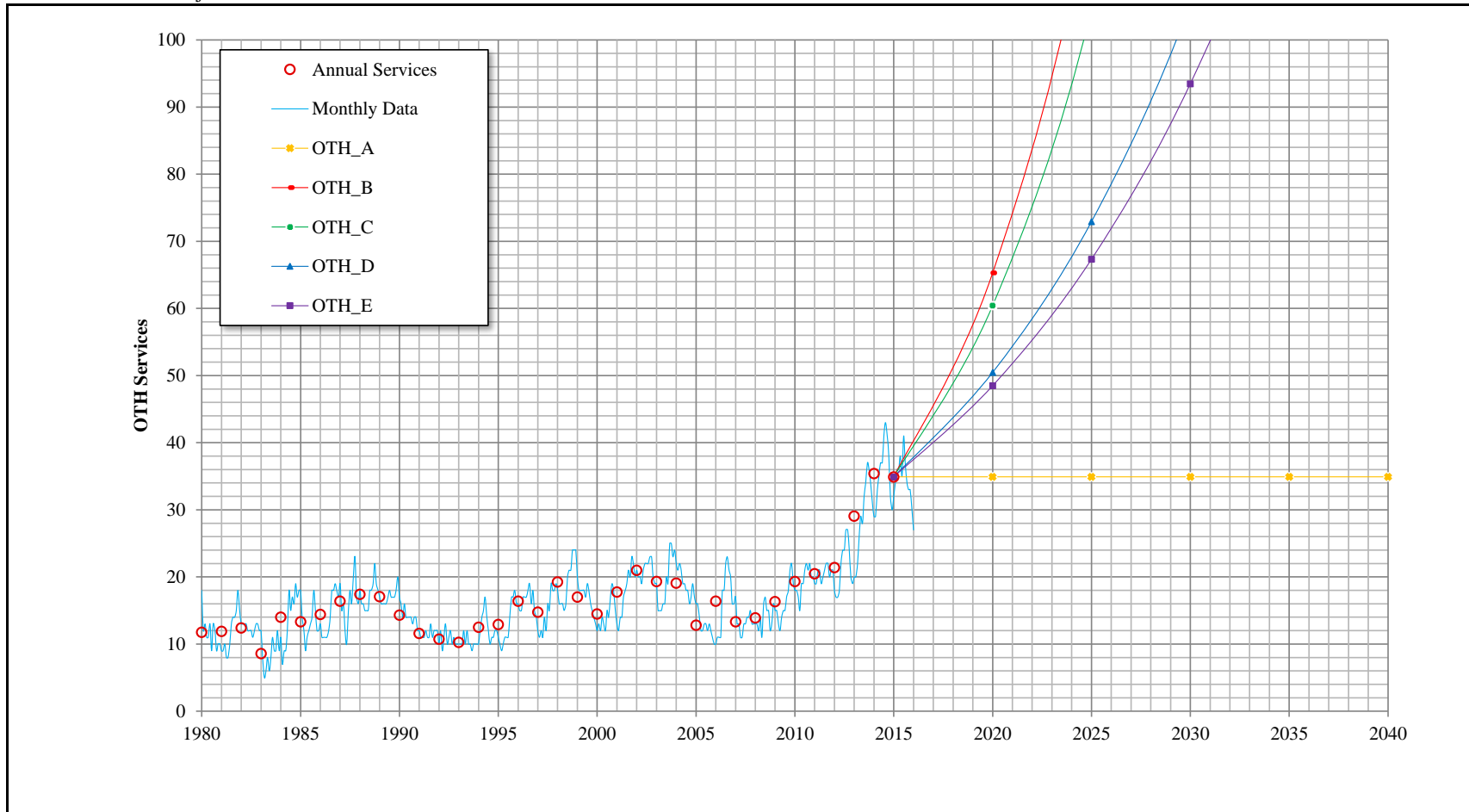


Customer Category	Trend	Growth Rate	Actual			Base Year	Projected							
			2000	2005	2010		2015	Services 2015	Services 2020	Services 2025	Services 2030	Services 2035	Services 2040	
GOV			200	211	198	203								
	GOV_A	Zero Growth Rate				203	203	203	203	203	203	203	203	203
	GOV_B	5 Yr. Avg.				203	203	208	213	218	224	229	229	
	GOV_C	10 Yr. Avg.				203	203	201	199	197	195	193	193	
	GOV_D	15 Yr. Avg.				203	203	205	207	210	213	215	215	
	> GOV_E	20 Yr. Avg.				203	203	211	219	228	238	247	247	

California Water Service Company - Los Altos Suburban District

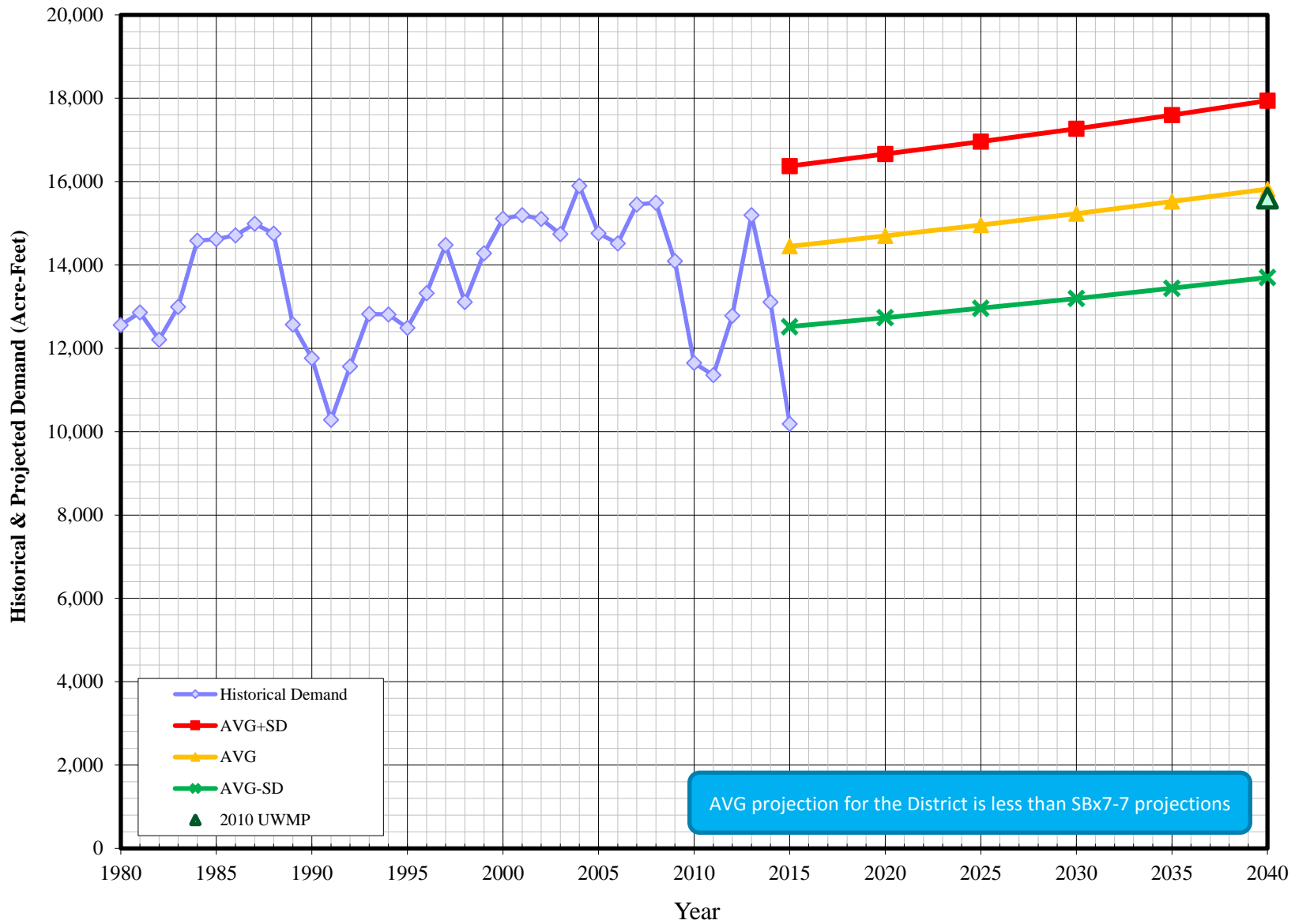
Water Supply and Demand Analysis and Projections

OTH Historical & Projected Services



Customer Category	Trend	Growth Rate	Actual				Projected					
			2000	2005	2010	Base Year 2015	Services 2015	Services 2020	Services 2025	Services 2030	Services 2035	Services 2040
OTH	>	OTH_A Zero Growth Rate	15	13	19	35	35	35	35	35	35	35
		OTH_B 5 Yr. Avg.				35	35	65	122	228	427	798
		OTH_C 10 Yr. Avg.				35	35	60	105	181	313	542
		OTH_D 15 Yr. Avg.				35	35	50	73	105	152	220
		OTH_E 20 Yr. Avg.				35	35	48	67	93	130	180

Historical & Projected Demand (LAS)

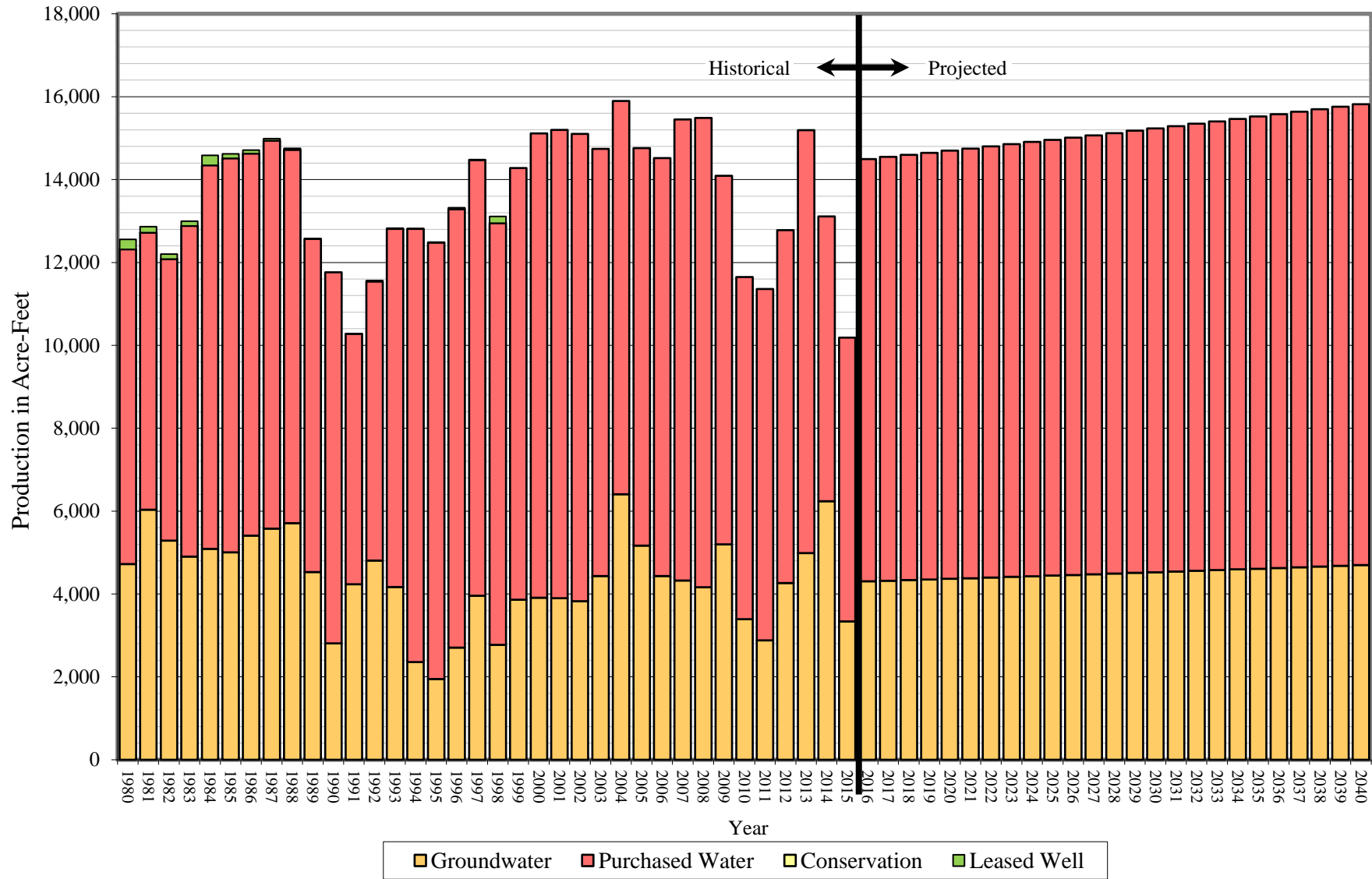


California Water Service Company - Los Altos Suburban District
Water Supply and Demand Analysis and Projections
Actual & Projected Demand in Acre-Feet

Worksheet 9

Customer Category	Actual Demand (AFY)								Projected Demand (AFY)					
	1980	1985	1990	1995	2000	2005	2010	2015	2015	2020	2025	2030	2035	2040
SFR	7,946	9,069	7,572	8,721	10,405	9,958	8,797	6,615	10,980	11,102	11,226	11,350	11,476	11,604
									9,995	10,105	10,218	10,331	10,446	10,562
									9,009	9,109	9,210	9,312	9,415	9,520
MFR	499	565	574	607	736	723	656	595	965	1,060	1,165	1,280	1,406	1,545
									856	941	1,033	1,135	1,248	1,371
									748	821	902	991	1,089	1,197
COM	1,603	2,316	2,221	2,261	2,600	2,376	2,318	1,930	2,750	2,778	2,806	2,834	2,862	2,891
									2,511	2,536	2,561	2,587	2,613	2,639
									2,271	2,294	2,317	2,340	2,364	2,388
IND	682	507	254	43	49	35	22	11	39	39	39	39	39	39
									20	20	20	20	20	20
									1	1	1	1	1	1
GOV	742	853	604	651	634	632	499	436	776	807	840	875	910	947
									616	641	668	695	723	753
									457	476	495	515	536	558
OTH	28	5	8	12	10	12	10	16	43	43	43	43	43	43
									28	28	28	28	28	28
									13	13	13	13	13	13
UAFW	1,056	1,304	527	194	678	1,021	-654	585	822	832	842	852	863	873
									422	427	432	438	443	449
									23	23	23	23	24	24
TOTAL (AFY)	12,556	14,619	11,760	12,488	15,111	14,758	11,648	10,188	16,374	16,661	16,959	17,272	17,599	17,941
									14,447	14,698	14,960	15,234	15,520	15,821
									12,521	12,736	12,961	13,196	13,442	13,700
TOTAL (MGD)	11.209	13.051	10.499	11.148	13.490	13.175	10.398	9.096	14.618	14.874	15.140	15.419	15.711	16.017
									12.898	13.122	13.356	13.600	13.856	14.124
									11.178	11.370	11.571	11.781	12.000	12.231

Historical and Projected Distribution of Demand by Source

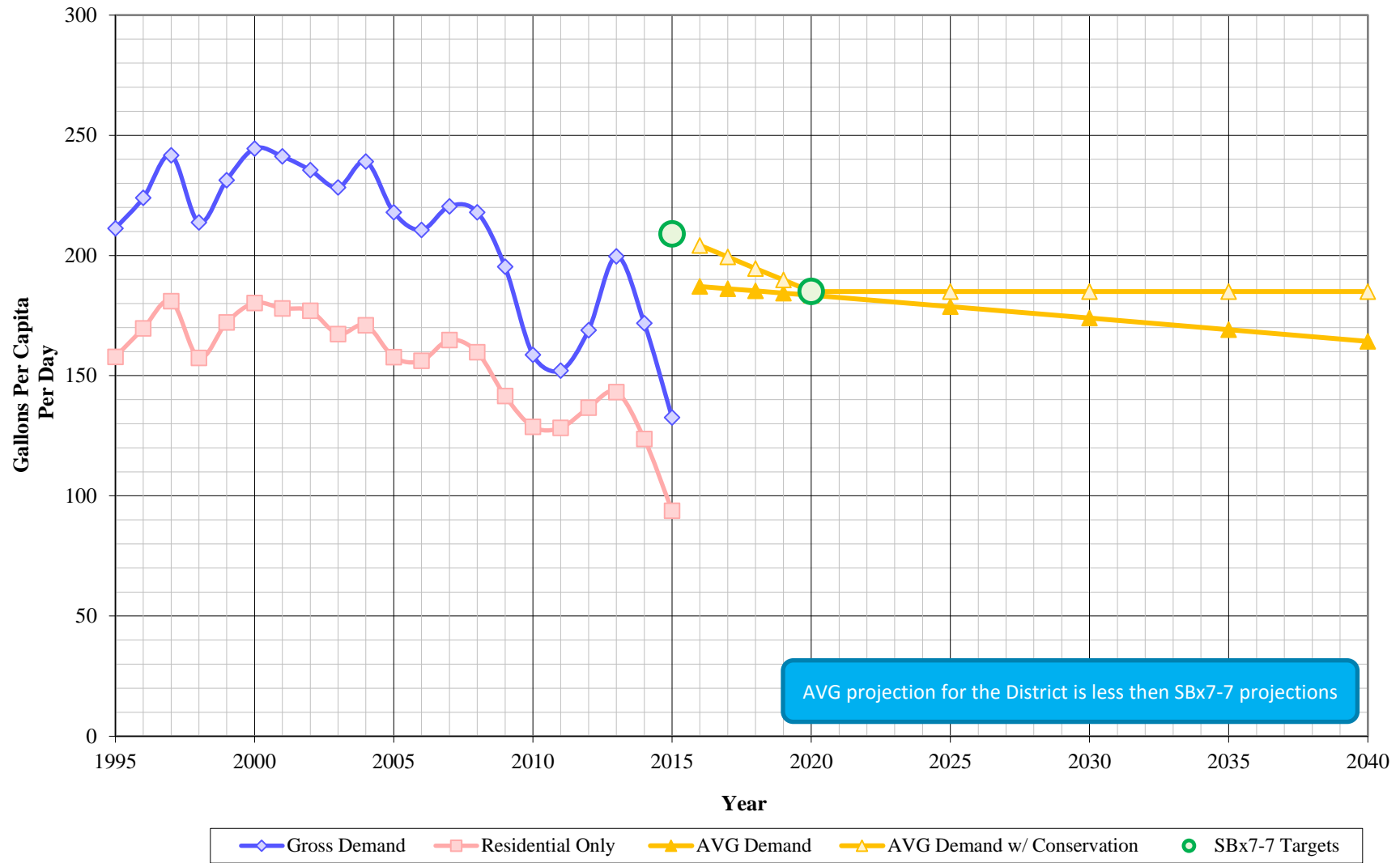


California Water Service Company - Los Altos Suburban District
Water Supply and Demand Analysis and Projections
Historical and Projected Distribution of Demand by Source

Worksheet 10

Year	Purchased Water		Ground Water		Leased Well Water		Conservation	Total		
	MGD	AFY	MGD	AFY	MGD	AFY		MGD	AFY	
1980	6.78	7,594	4.21	4,720	0.22	241		11.21	12,556	
1981	5.97	6,685	5.39	6,036	0.13	141		11.48	12,862	
1982	6.06	6,789	4.72	5,290	0.11	124		10.89	12,203	
1983	7.12	7,981	4.38	4,904	0.10	111		11.60	12,995	
1984	8.26	9,254	4.55	5,092	0.21	235		13.02	14,582	
1985	8.49	9,509	4.47	5,005	0.09	105		13.05	14,619	
1986	8.23	9,215	4.83	5,409	0.08	86		13.13	14,710	
1987	8.36	9,360	4.98	5,579	0.04	49		13.38	14,988	
1988	8.04	9,010	5.10	5,708	0.03	35		13.17	14,753	
1989	7.18	8,038	4.04	4,528	0.00	5		11.22	12,571	
1990	7.99	8,952	2.51	2,808	0.00	0		10.50	11,760	
1991	5.40	6,044	3.78	4,234	0.00	4		9.18	10,282	
1992	6.01	6,734	4.29	4,807	0.02	22		10.32	11,563	
1993	7.71	8,637	3.72	4,170	0.02	19		11.45	12,826	
1994	9.33	10,451	2.10	2,356	0.00	4		11.44	12,810	
1995	9.40	10,528	1.74	1,951	0.01	9		11.15	12,488	
1996	9.44	10,576	2.42	2,706	0.03	37		11.89	13,319	
1997	9.39	10,513	3.53	3,956	0.01	9		12.93	14,479	
1998	9.08	10,175	2.47	2,772	0.15	163		11.70	13,110	
1999	9.30	10,418	3.45	3,860	0.00	0		12.75	14,278	
2000	10.00	11,203	3.49	3,908	0.00	0		13.49	15,111	
2001	10.09	11,298	3.48	3,898	0.00	0		13.57	15,196	
2002	10.07	11,277	3.42	3,827	0.00	0		13.48	15,104	
2003	9.20	10,305	3.96	4,433	0.00	0		13.16	14,738	
2004	8.47	9,489	5.72	6,409	0.00	0		14.19	15,898	
2005	8.56	9,593	4.61	5,165	0.00	0		13.17	14,758	
2006	9.00	10,084	3.96	4,434	0.00	0		12.96	14,518	
2007	9.93	11,126	3.86	4,325	0.00	0		13.79	15,451	
2008	10.11	11,329	3.71	4,161	0.00	0		13.83	15,490	
2009	7.94	8,892	4.64	5,200	0.00	0		12.58	14,092	
2010	7.37	8,252	3.03	3,396	0.00	0		10.40	11,648	
2011	7.57	8,478	2.57	2,881	0.00	0	0.00	0	10.14	11,358
2012	7.60	8,513	3.81	4,266	0.00	0	0.00	0	11.41	12,779
2013	9.11	10,203	4.45	4,990	0.00	0	0.00	0	13.56	15,192
2014	6.14	6,872	5.57	6,240	0.00	0	0.00	0	11.71	13,112
2015	6.11	6,848	2.98	3,341	0.00	0	0.00	0	9.10	10,188
2016	9.10	10,190	3.84	4,307	0.00	0	0.00	0	12.94	14,497
2017	9.13	10,225	3.86	4,322	0.00	0	0.00	0	12.99	14,547
2018	9.16	10,260	3.87	4,336	0.00	0	0.00	0	13.03	14,597
2019	9.19	10,296	3.88	4,352	0.00	0	0.00	0	13.08	14,647
2020	9.22	10,332	3.90	4,367	0.00	0	0.00	0	13.12	14,698
2021	9.26	10,368	3.91	4,382	0.00	0	0.00	0	13.17	14,750
2022	9.29	10,404	3.93	4,397	0.00	0	0.00	0	13.21	14,802
2023	9.32	10,441	3.94	4,413	0.00	0	0.00	0	13.26	14,854
2024	9.35	10,478	3.95	4,429	0.00	0	0.00	0	13.31	14,907
2025	9.39	10,516	3.97	4,444	0.00	0	0.00	0	13.36	14,960
2026	9.42	10,554	3.98	4,460	0.00	0	0.00	0	13.40	15,014
2027	9.46	10,592	4.00	4,477	0.00	0	0.00	0	13.45	15,068
2028	9.49	10,630	4.01	4,493	0.00	0	0.00	0	13.50	15,123
2029	9.52	10,669	4.03	4,509	0.00	0	0.00	0	13.55	15,178
2030	9.56	10,708	4.04	4,526	0.00	0	0.00	0	13.60	15,234
2031	9.59	10,748	4.06	4,542	0.00	0	0.00	0	13.65	15,290
2032	9.63	10,788	4.07	4,559	0.00	0	0.00	0	13.70	15,347
2033	9.67	10,828	4.09	4,576	0.00	0	0.00	0	13.75	15,404
2034	9.70	10,868	4.10	4,594	0.00	0	0.00	0	13.80	15,462
2035	9.74	10,910	4.12	4,611	0.00	0	0.00	0	13.86	15,520
2036	9.78	10,951	4.13	4,628	0.00	0	0.00	0	13.91	15,579
2037	9.81	10,993	4.15	4,646	0.00	0	0.00	0	13.96	15,639
2038	9.85	11,035	4.16	4,664	0.00	0	0.00	0	14.02	15,699
2039	9.89	11,078	4.18	4,682	0.00	0	0.00	0	14.07	15,759
2040	9.93	11,121	4.20	4,700	0.00	0	0.00	0	14.12	15,821

Per Capita Consumption (LAS)



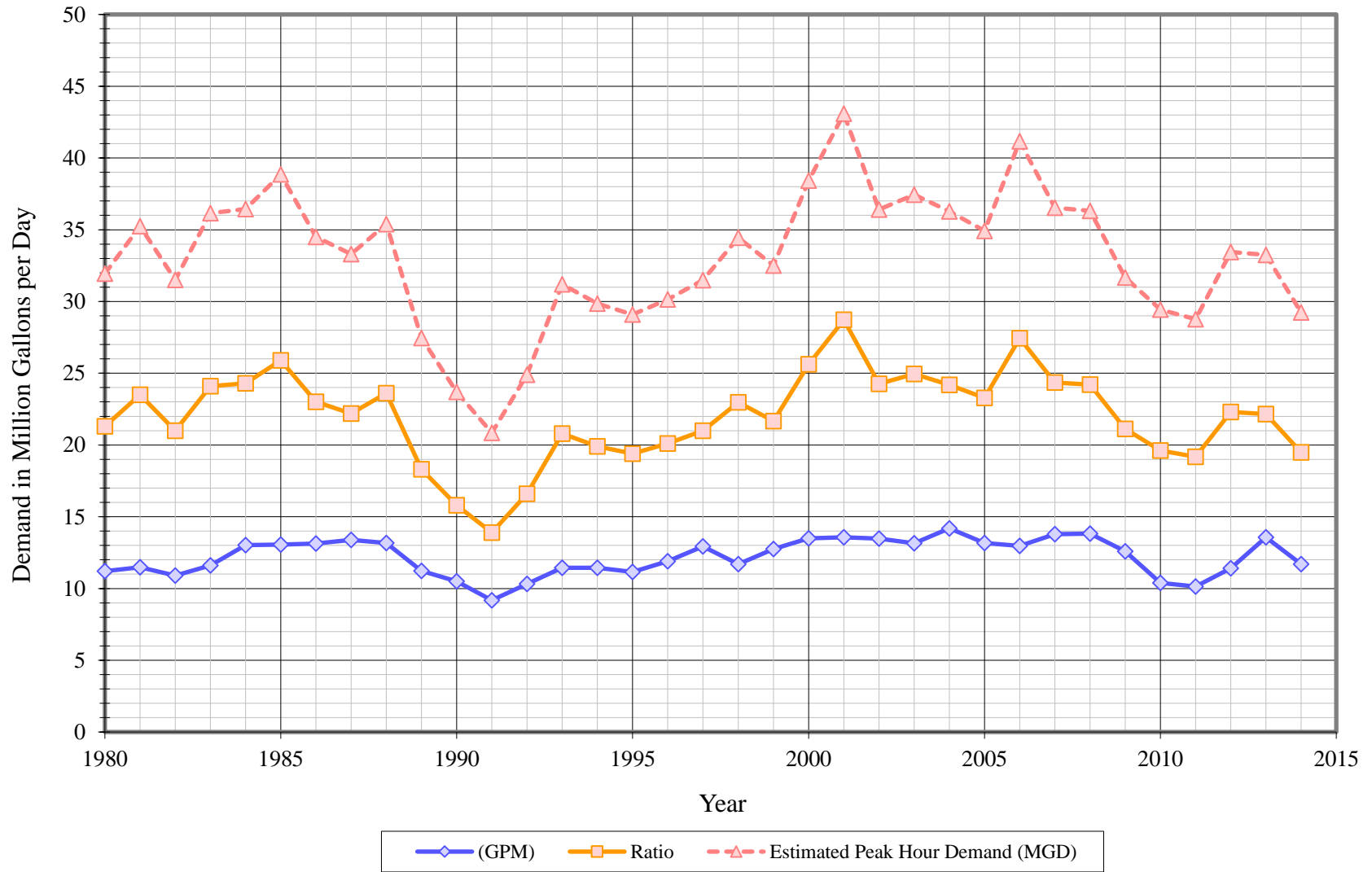
California Water Service Company - Los Altos Suburban District
Water Supply and Demand Analysis and Projections
Per Capita Water Demand Calculation

Worksheet 15

Year	POP	Historical				Projected			
		Gross Demand		Residential Only		Avg Demand		Avg Demand w/ Cons	
		Usage (AFY)	Per Capita (GPCPD)	Usage (AFY)	Per Capita (GPCPD)	Demand (AFY)	Per Capita (GPCPD)	Demand (AFY)	Per Capita (GPCPD)
1995	52,762	12,488	211	9,328	158				
1996	53,094	13,319	224	10,088	170				
1997	53,481	14,479	242	10,843	181				
1998	54,755	13,110	214	9,654	157				
1999	55,092	14,278	231	10,624	172				
2000	55,177	15,111	244	11,141	180				
2001	56,245	15,196	241	11,214	178				
2002	57,256	15,104	235	11,353	177				
2003	57,644	14,738	228	10,804	167				
2004	59,362	15,898	239	11,371	171				
2005	60,450	14,758	218	10,681	158				
2006	61,529	14,518	211	10,765	156				
2007	62,565	15,451	220	11,553	165				
2008	63,442	15,490	218	11,351	160				
2009	64,425	14,092	195	10,213	142				
2010	65,550	11,648	159	9,453	129				
2011	66,660	11,358	152	9,580	128				
2012	67,519	12,779	169	10,337	137				
2013	67,940	15,192	200	10,897	143				
2014	68,114	13,112	172	9,438	124				
2015	68,604	10,188	133	7,210	94				
2016	69,172					14,497	187	15,822	204
2017	69,749					14,547	186	15,579	199
2018	70,335					14,597	185	15,332	195
2019	70,931					14,647	184	15,080	190
2020	71,536					14,698	183	14,824	185
2025	74,714					14,960	179	15,483	185
2030	78,163					15,234	174	16,198	185
2035	81,909					15,520	169	16,974	185
2040	85,980					15,821	164	17,817	185

<i>SBx7-7 Targets</i>	
2015	209
2020	185

Average Day, Maximum Day, Peak Demand

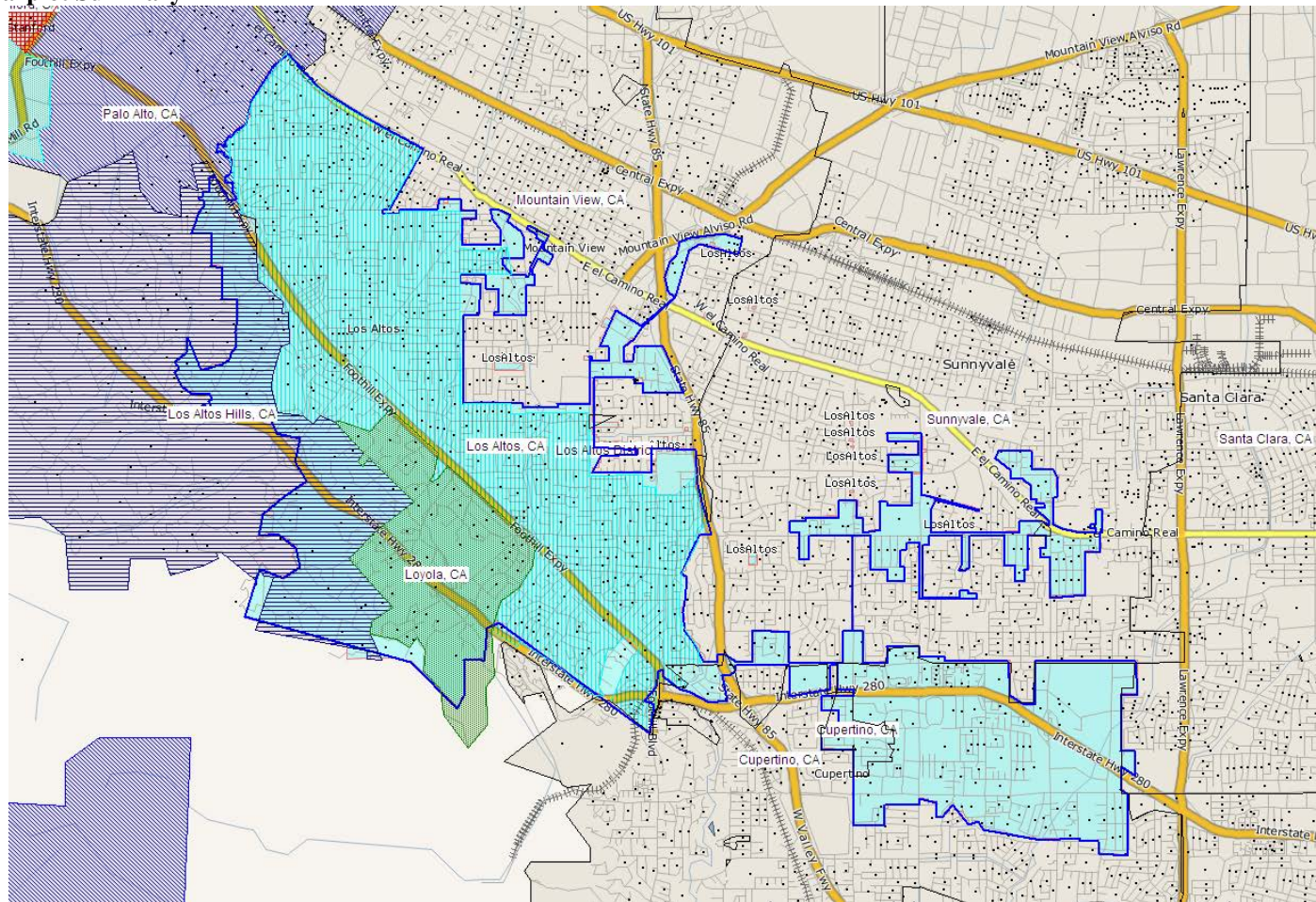


California Water Service Company - Los Altos Suburban District
Water Supply and Demand Analysis and Projections
Historical and Projected Average Day, Maximum Day, and Peak Demand

Worksheet 11

Year	Historical Annual Demand		Average Day Demand		Maximum Day Demand		MDD ADD Ratio	Estimated Peak Hour Demand		PHD MDD Ratio	PHD ADD Ratio	Measured Peak Hour Demand		PHD MDD Ratio
	(AFY)	(MGY)	(MGD)	(GPD)	(MGD)	(GPD)		(MGD)	(GPM)			(MGD)	(GPM)	
1980	12,556	4,091	11.21	721	21.30	1,369	1.90	31.95	22,188	1.50	2.85			
1981	12,862	4,191	11.48	736	23.50	1,506	2.05	35.25	24,479	1.50	3.07			
1982	12,203	3,976	10.89	669	21.00	1,290	1.93	31.50	21,875	1.50	2.89			
1983	12,995	4,234	11.60	685	24.10	1,422	2.08	36.15	25,104	1.50	3.12			
1984	14,582	4,751	13.02	766	24.30	1,429	1.87	36.45	25,313	1.50	2.80			
1985	14,619	4,764	13.05	766	25.90	1,520	1.98	38.85	26,979	1.50	2.98			
1986	14,710	4,793	13.13	770	23.00	1,348	1.75	34.50	23,958	1.50	2.63			
1987	14,988	4,884	13.38	780	22.20	1,294	1.66	33.30	23,125	1.50	2.49			
1988	14,753	4,807	13.17	763	23.60	1,367	1.79	35.40	24,583	1.50	2.69			
1989	12,571	4,096	11.22	649	18.30	1,058	1.63	27.45	19,063	1.50	2.45			
1990	11,760	3,832	10.50	606	15.80	912	1.50	23.70	16,458	1.50	2.26			
1991	10,282	3,350	9.18	529	13.90	800	1.51	20.85	14,479	1.50	2.27			
1992	11,563	3,768	10.32	593	16.60	954	1.61	24.90	17,292	1.50	2.41			
1993	12,826	4,179	11.45	657	20.80	1,194	1.82	31.20	21,667	1.50	2.72			
1994	12,810	4,174	11.44	656	19.90	1,141	1.74	29.85	20,729	1.50	2.61			
1995	12,488	4,069	11.15	635	19.40	1,106	1.74	29.10	20,208	1.50	2.61			
1996	13,319	4,340	11.89	675	20.10	1,141	1.69	30.15	20,938	1.50	2.54			
1997	14,479	4,718	12.93	730	21.00	1,186	1.62	31.50	21,872	1.50	2.44			
1998	13,110	4,272	11.70	655	22.97	1,284	1.96	34.45	23,924	1.50	2.94			
1999	14,278	4,652	12.75	710	21.67	1,207	1.70	32.51	22,574	1.50	2.55			
2000	15,111	4,924	13.49	750	25.62	1,425	1.90	38.43	26,688	1.50	2.85			
2001	15,196	4,952	13.57	753	28.72	1,594	2.12	43.08	29,917	1.50	3.18			
2002	15,104	4,922	13.48	747	24.27	1,345	1.80	36.40	25,278	1.50	2.70			
2003	14,738	4,803	13.16	739	24.96	1,401	1.90	37.44	26,000	1.50	2.85			
2004	15,898	5,180	14.19	784	24.19	1,336	1.70	36.28	25,197	1.50	2.56			
2005	14,758	4,809	13.17	726	23.28	1,282	1.77	34.92	24,249	1.50	2.65			
2006	14,518	4,731	12.96	712	27.44	1,507	2.12	41.16	28,583	1.50	3.18			
2007	15,451	5,035	13.79	758	24.36	1,339	1.77	36.54	25,376	1.50	2.65			
2008	15,490	5,047	13.83	760	24.21	1,330	1.75	36.31	25,218	1.50	2.63			
2009	14,092	4,592	12.58	689	21.12	1,157	1.68	31.68	21,998	1.50	2.52			
2010	11,648	3,795	10.40	568	19.62	1,072	1.89	29.43	20,440	1.50	2.83			
2011	11,358	3,701	10.14	552	19.18	1,045	1.89	28.77	19,977	1.50	2.84			
2012	12,779	4,164	11.41	621	22.30	1,214	1.95	33.45	23,227	1.50	2.93			
2013	15,192	4,950	13.56	737	22.16	1,205	1.63	33.25	23,088	1.50	2.45			
2014	13,112	4,272	11.71	634	19.49	1,056	1.66	29.23	20,297	1.50	2.50			
2015														
10 year Average			12.36	676	22.32	1,221	1.81	33.47	23,245	1.50	2.72			
5 year Average			11.44	623	20.55	1,118	1.81	30.82	21,406	1.50	2.71			

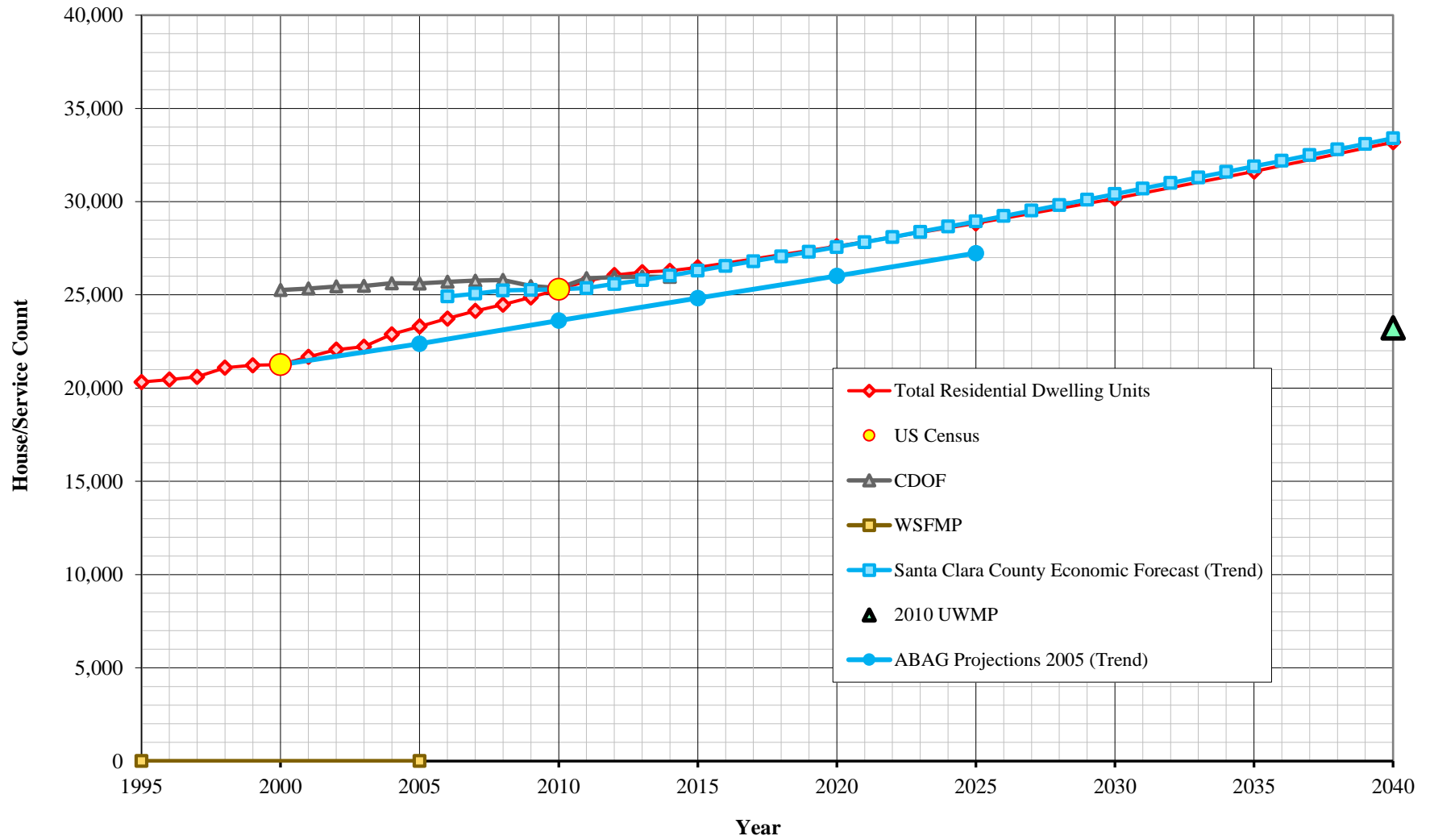
California Water Service Company - Los Altos Suburban District
Water Supply and Demand Analysis and Projections
Marplot Summary



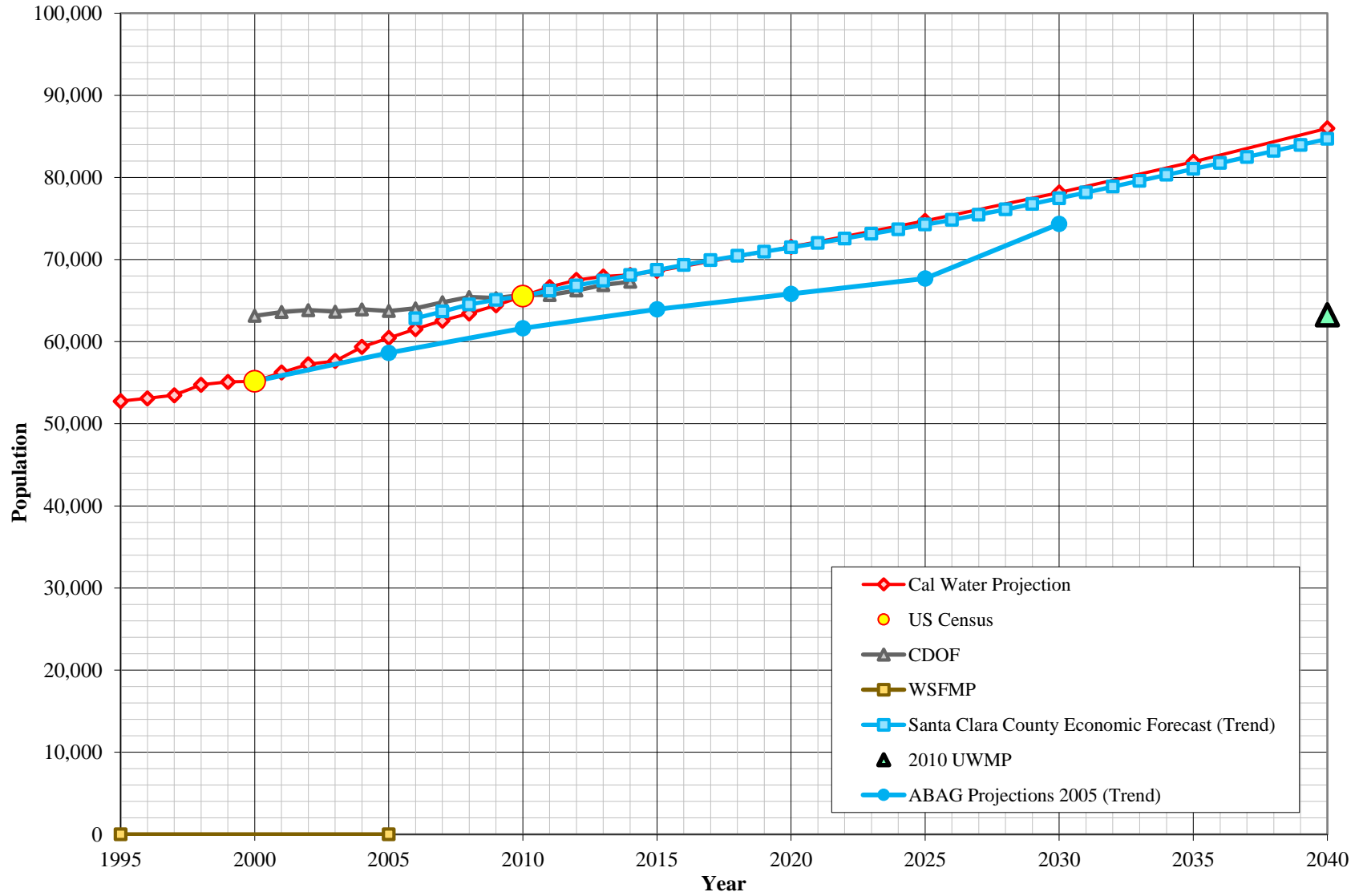
System	US Census 2000 Summary				US Census 2010 Summary				2000-2010 Change		
	Census Blocks	Population	Housing Units (HU)	Density	Census Blocks	Population	Housing Units (HU)	Density	Percentage Population Change	Percentage HU Change	Density Change
Los Alto Suburban	662	55,177	21,258	2.60	631	65,550	25,301	2.59	18.8%	19.0%	-0.2%
	662	55,177	21,258	2.60	631	65,550	25,301	2.59	18.8%	19.0%	-0.2%

MARPLOT disclaimer: The population and housing number given above are only rough estimates. They are based on the US Census Blocks. Although Census Blocks are polygons, MARPLOT uses the centroid, or center point, rather than the entire polygon. If a Census Block centroid is within any of the MARPLOT selected objects, the population and housing numbers for that block are tallied, even if only part of the block is within the selected object. It is possible for a block not be counted if its centroid is not within selected objects, even though part of the block is within the selected objects.

Housing Projections



Population Projections



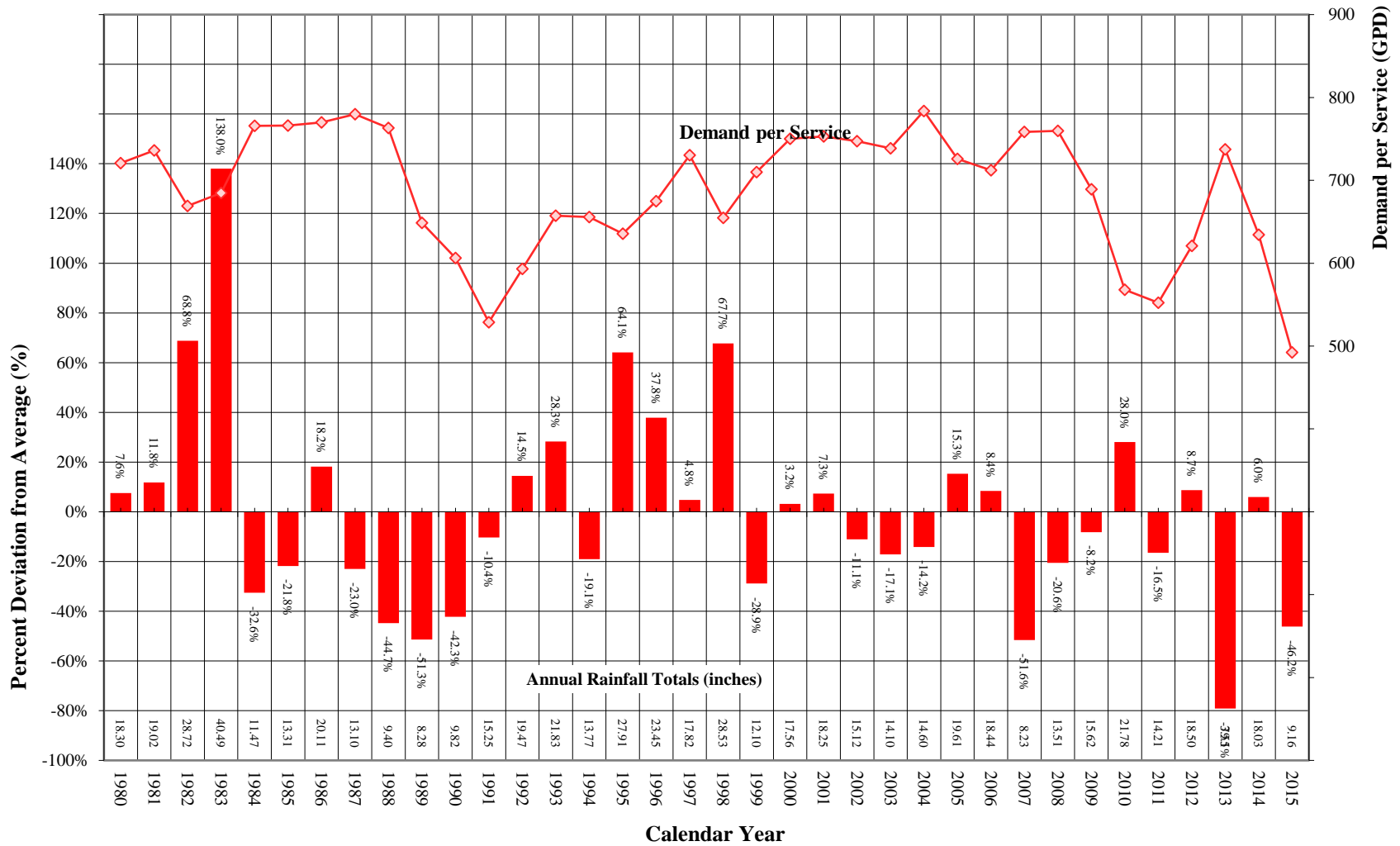
California Water Service Company - Los Altos Suburban District
Water Supply and Demand Analysis and Projections
Population Estimate

Year	US Census		Persons per Housing Unit	Single Family Residential	Multi Family Residential			Flat Rate Residential
	Population	Housing Units		Services (DU)	Services	Units (DU)	Unit Density	Services (DU)
2000	55,177	21,258	2.596	16,575	119	4,683	39.3	0
2010	65,550	25,301	2.591	16,784	149	8,517	57.0	0
	18.8%	19.0%	-0.2%	1.3%	25.6%	81.9%	44.9%	0.0%

Year	Single Family Residential Services (DU)	Multi Family Residential			Flat Rate Residential Services (DU)	Total Residential Dwelling Units	Persons per Housing Unit	Estimated District Population	ACTUAL / PROJECTED
		Services	Residential Units (DU)	Unit Density					
1995	16,189	105	4,138	39.3	0	20,327	2.596	52,762	
1996	16,252	107	4,204	39.3	0	20,456	2.596	53,094	
1997	16,325	109	4,279	39.3	0	20,605	2.596	53,481	
1998	16,479	117	4,617	39.3	0	21,096	2.596	54,755	
1999	16,546	119	4,679	39.3	0	21,225	2.596	55,092	
2000	16,575	119	4,683	39.3	0	21,258	2.596	55,177	
2001	16,607	119	5,066	42.6	0	21,673	2.595	56,245	
2002	16,618	119	5,449	45.8	0	22,067	2.595	57,256	
2003	16,388	119	5,833	49.0	0	22,221	2.594	57,644	
2004	16,671	119	6,216	52.2	0	22,887	2.594	59,362	
2005	16,711	119	6,600	55.5	0	23,311	2.593	60,450	
2006	16,748	119	6,983	58.7	0	23,731	2.593	61,529	
2007	16,769	119	7,367	61.9	0	24,136	2.592	62,565	
2008	16,728	136	7,750	57.1	0	24,478	2.592	63,442	
2009	16,729	150	8,134	54.1	0	24,862	2.591	64,425	
2010	16,784	149	8,517	57.0	0	25,301	2.591	65,550	
2011	16,829	151	8,900	59.0	0	25,729	2.591	66,660	
2012	16,831	156	9,230	59.0	0	26,061	2.591	67,519	
2013	16,841	159	9,383	59.0	0	26,223	2.591	67,940	
2014	16,903	159	9,388	59.0	0	26,291	2.591	68,114	
2015	16,915	162	9,565	59.0	0	26,480	2.591	68,604	
2020	17,103	178	10,508	59.0	0	27,611	2.591	71,536	PROJECTED
2025	17,293	196	11,545	59.0	0	28,838	2.591	74,714	
2030	17,485	215	12,685	59.0	0	30,170	2.591	78,163	
2035	17,679	236	13,936	59.0	0	31,615	2.591	81,909	
2040	17,875	259	15,312	59.0	0	33,187	2.591	85,980	

Notes: linear extrapolation used to estimated MFR-DU from 2000. Estimate extend until 2011 due to reclassification, afterwards a constant MFR Unit Density is used.

Comparison of Annual Rainfall to Historical Average



California Water Service Company - Los Altos Suburban District
Water Supply and Demand Analysis and Projections

Temperature & Rainfall History

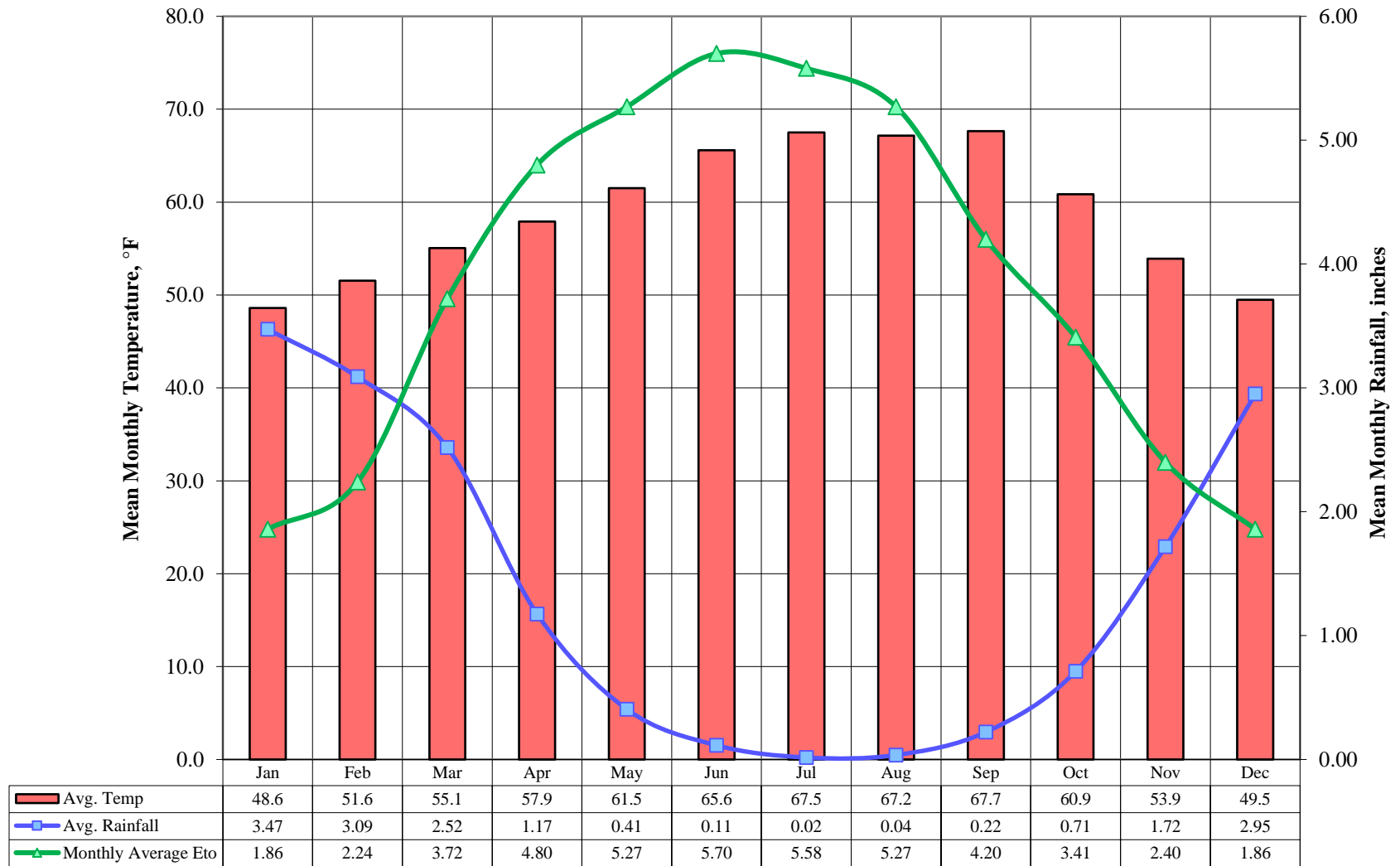
Year	Precipitation		Temperature			Demand per Service (gpd)	Percent of Average Demand
	Annual (in)	Percent Variation	Tmax (°F)	Tmin (°F)	Mean (°F)		
1980	18.30	7.6%	80.10	40.80	60.5	721	4.7%
1981	19.02	11.8%	86.20	42.60	64.4	736	7.0%
1982	28.72	68.8%	80.80	36.50	58.7	669	-2.8%
1983	40.49	138.0%	84.80	39.60	62.2	685	-0.5%
1984	11.47	-32.6%	88.20	38.80	63.5	766	11.3%
1985	13.31	-21.8%	83.60	37.50	60.6	766	11.3%
1986	20.11	18.2%	81.50	39.20	60.4	770	11.9%
1987	13.10	-23.0%	81.00	39.20	60.1	780	13.3%
1988	9.40	-44.7%	84.40	39.30	61.9	763	10.9%
1989	8.28	-51.3%	82.80	37.30	60.1	649	-5.7%
1990	9.82	-42.3%	81.40	33.70	57.6	606	-11.9%
1991	15.25	-10.4%	80.80	38.60	59.7	529	-23.2%
1992	19.47	14.5%	83.50	37.70	60.6	593	-13.8%
1993	21.83	28.3%	85.00	38.80	61.9	657	-4.5%
1994	13.77	-19.1%	84.60	37.60	61.1	656	-4.7%
1995	27.91	64.1%	85.50	44.30	64.9	635	-7.7%
1996	23.45	37.8%	86.90	42.10	64.5	675	-1.9%
1997	17.82	4.8%	85.00	39.80	62.4	730	6.1%
1998	28.53	67.7%	83.60	36.80	60.2	655	-4.9%
1999	12.10	-28.9%	79.40	39.60	59.5	710	3.2%
2000	17.56	3.2%	81.00	41.00	61.0	750	9.0%
2001	18.25	7.3%	82.80	38.40	60.6	753	9.4%
2002	15.12	-11.1%	82.70	38.50	60.6	747	8.6%
2003	14.10	-17.1%	83.30	41.40	62.4	739	7.3%
2004	14.60	-14.2%	83.90	40.80	62.4	784	13.9%
2005	19.61	15.3%	83.00	40.30	61.7	726	5.5%
2006	18.44	8.4%	85.20	39.10	62.2	712	3.5%
2007	8.23	-51.6%	80.80	36.30	58.6	758	10.2%
2008	13.51	-20.6%	82.20	39.50	60.9	760	10.4%
2009	15.62	-8.2%	83.80	40.30	62.1	689	0.2%
2010	21.78	28.0%	81.60	43.00	62.3	568	-17.5%
2011	14.21	-16.5%	82.00	38.00	60.0	552	-19.7%
2012	18.50	8.7%	79.50	39.60	59.6	621	-9.8%
2013	3.55	-79.1%	80.80	36.60	58.7	737	7.2%
2014	18.03	6.0%	83	41.9	62.2	634	-7.8%
2015	9.16	-46.2%	84	40.3	62.1	492	-28.5%
2016							
2017							
2018							
2019							
2020							

Precipitation (1895 - present)						Monthly Average Eto
	Mean	High	Year	Low	Year	
	in.	in.	-	in.	-	
Jan	3.47	11.77	1911	0.01	2015	1.86
Feb	3.09	12.83	1998	0.02	1953	2.24
Mar	2.52	9.28	1983	0.00	1934	3.72
Apr	1.17	5.33	1967	0.00	1909	4.80
May	0.41	2.33	1905	0.00	1903	5.27
Jun	0.11	1.28	2011	0.00	1901	5.70
Jul	0.02	0.46	1980	0.00	1965	5.58
Aug	0.04	0.91	1976	0.00	1960	5.27
Sep	0.22	4.82	1918	0.00	1897	4.20
Oct	0.71	5.09	1962	0.00	1903	3.41
Nov	1.72	6.51	1983	0.00	1959	2.40
Dec	2.95	14.45	1955	0.00	1989	1.86
Annual	16.43	40.49	1983	3.55	2013	46.31

Temperature (1895 - present)			
	Tmax	Tmin	Mean
	°F	°F	°F
Jan	66.5	30.7	48.6
Feb	68.2	34.9	51.6
Mar	74.0	36.1	55.1
Apr	76.2	39.6	57.9
May	80.9	42.1	61.5
Jun	86.2	45.0	65.6
Jul	86.9	48.1	67.5
Aug	86.7	47.6	67.2
Sep	88.2	47.1	67.7
Oct	81.3	40.4	60.9
Nov	72.3	35.5	53.9
Dec	65.5	33.5	49.5
Annual	88.2	30.7	59.5

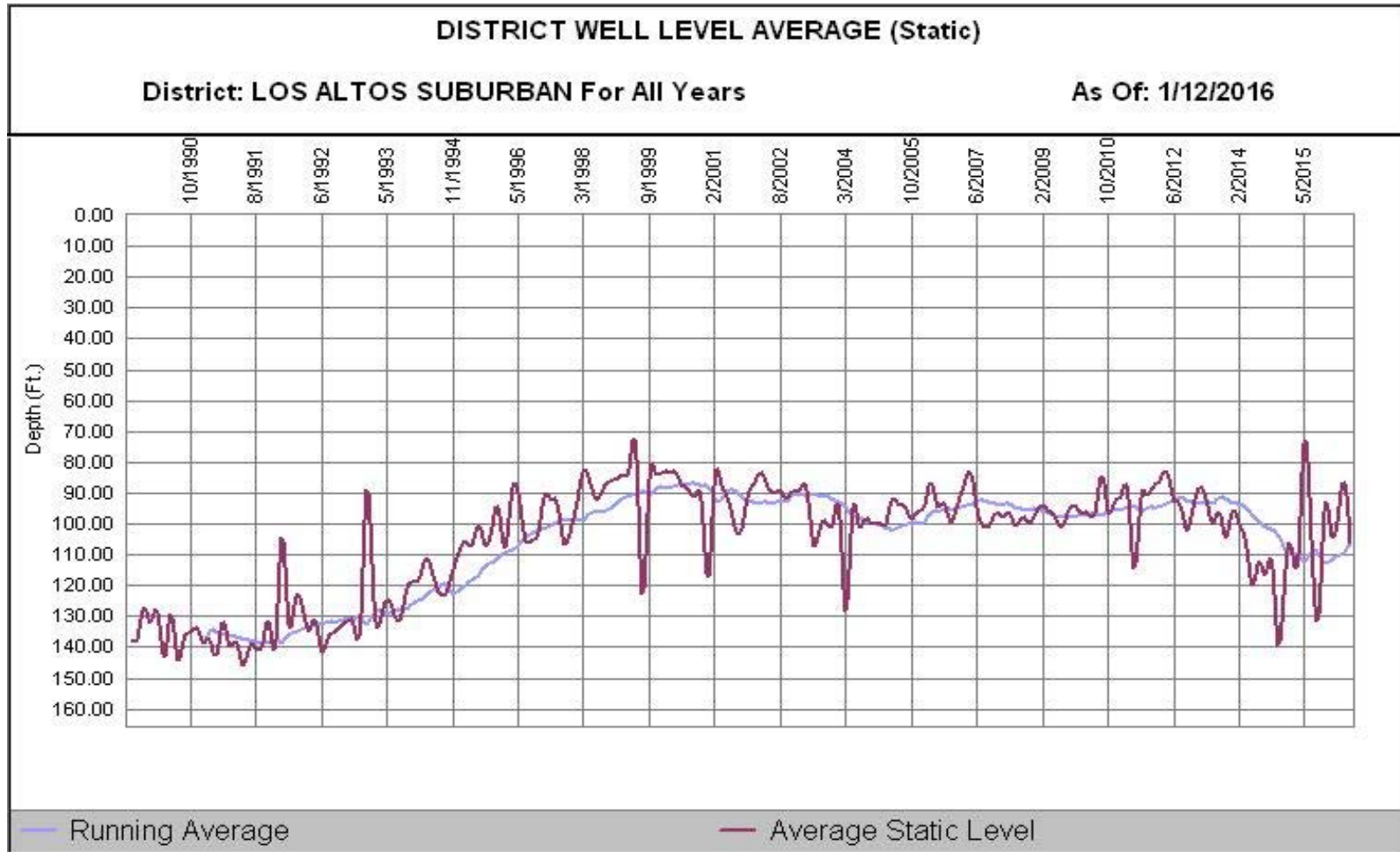
- 1) Eto values based on California Irrigation Management Information System (CIMIS), <http://www.cimis.water.ca.gov/cimis/welcome.jsp>, EvapoTranspiration (Eto) Zones Map, Zone 3
- 2) PPT, Tmax, Tmin obtained from PRISM where, PPT is total monthly rainfall, Tmax is average of maximum temperatures for given month, and Tmin is average of minimum temperatures for given month
- 3) Percent variation based on average of 1980 to present values

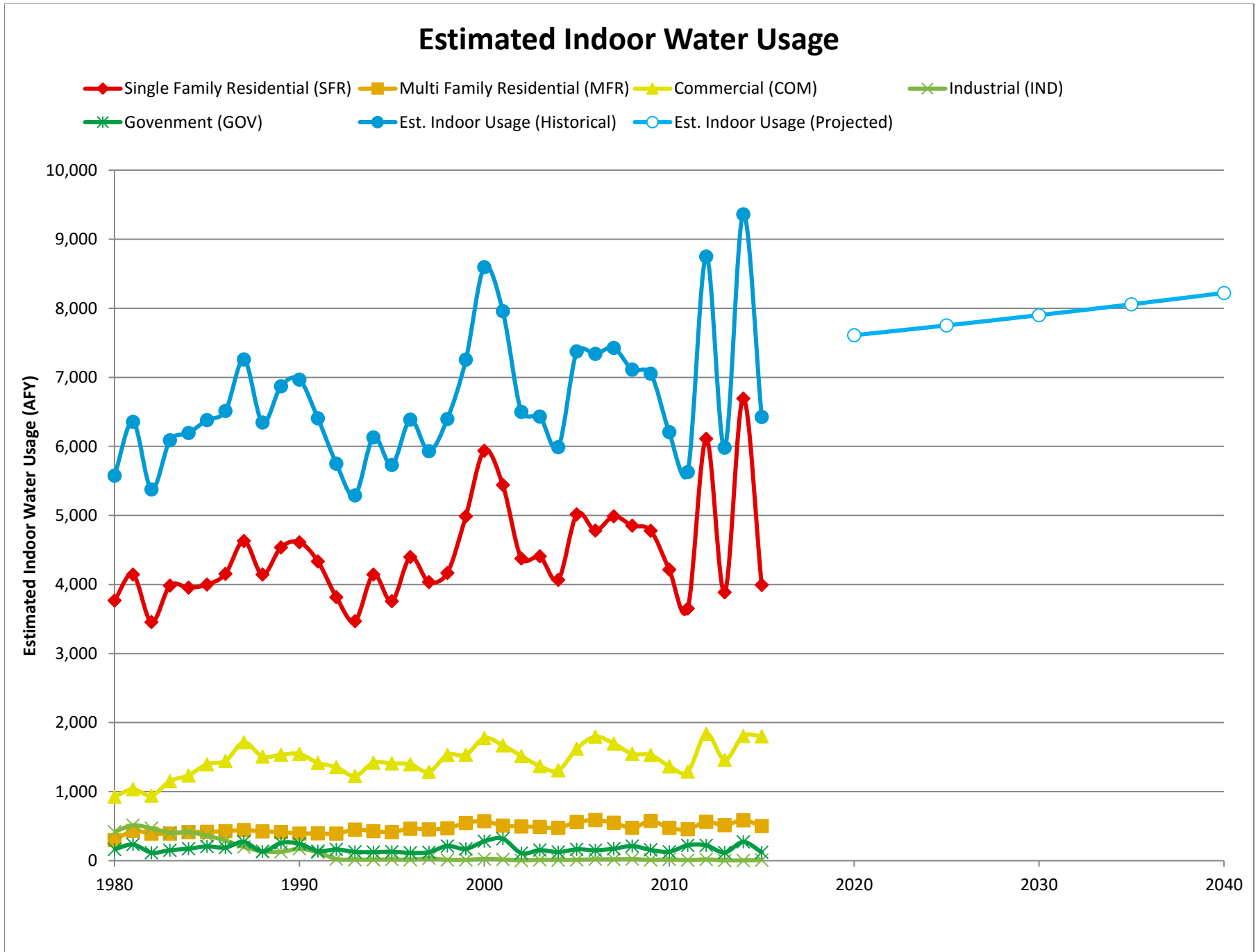
Average Monthly Temperature, Rainfall, and Monthly Eto



California Water Service Company - Los Altos Suburban District Water Supply and Demand Analysis and Projections

Groundwater Production Facilities





California Water Service Company - Los Altos Suburban District
Water Supply and Demand Analysis and Projections

Estimated Indoor/Outdoor Water Usage

Year	Single Family Residential (SFR)								Multi Family Residential (MFR)				Commercial (COM)			
	SFR Jan Usage	Metered SFR Indoor Use (Annualized 90% of January Total)		Indoor Flat Rate Usage (AFY)	Total SFR Indoor Usage			MFR Jan Usage (CCF)	MFR Indoor Use (Annualized 90% of January Total)			COM Jan Usage (CCF)	COM Indoor Use (Annualized 90% of January Total)			
	JAN (CCF)	AFY	AF/Serv		AFY	GPD/Serv	%		AFY	GPD/Serv	%		AFY	GPD/Serv	%	
1980	152,007	3,769	0.263	0	3,769	235	47%	12,030	298	3,964	60%	37,322	925	866	58%	
1981	167,185	4,145	0.289	0	4,145	258	51%	17,328	430	5,346	82%	41,730	1,035	958	63%	
1982	139,342	3,455	0.231	0	3,455	206	44%	15,845	393	4,062	77%	38,058	944	834	56%	
1983	160,713	3,985	0.256	0	3,985	228	49%	15,770	391	3,639	69%	46,471	1,152	975	62%	
1984	159,525	3,955	0.253	0	3,955	226	43%	16,722	415	3,832	72%	49,848	1,236	1,031	57%	
1985	161,266	3,998	0.256	0	3,998	228	44%	16,836	417	3,770	74%	56,375	1,398	1,159	60%	
1986	167,590	4,155	0.265	0	4,155	237	46%	17,238	427	3,854	69%	58,306	1,446	1,204	61%	
1987	186,753	4,630	0.293	0	4,630	262	49%	17,899	444	3,791	66%	69,131	1,714	1,461	70%	
1988	167,147	4,144	0.261	0	4,144	233	46%	17,118	424	3,577	70%	60,883	1,509	1,284	60%	
1989	182,981	4,537	0.285	0	4,537	254	60%	16,750	415	3,517	73%	61,872	1,534	1,295	73%	
1990	185,999	4,612	0.289	0	4,612	258	61%	15,837	393	3,328	68%	62,358	1,546	1,316	70%	
1991	174,823	4,334	0.271	0	4,334	242	67%	15,943	395	3,358	76%	57,073	1,415	1,204	72%	
1992	153,950	3,817	0.238	0	3,817	212	51%	15,770	391	3,322	67%	54,628	1,354	1,149	64%	
1993	139,906	3,469	0.216	0	3,469	193	42%	18,182	451	3,824	75%	49,399	1,225	1,035	53%	
1994	167,110	4,143	0.258	0	4,143	230	49%	17,267	428	3,637	72%	57,224	1,419	1,203	63%	
1995	151,530	3,757	0.232	0	3,757	207	43%	16,790	416	3,534	69%	56,776	1,408	1,196	62%	
1996	177,355	4,397	0.271	0	4,397	242	47%	18,663	463	3,867	73%	56,348	1,397	1,177	57%	
1997	162,724	4,034	0.247	0	4,034	221	40%	18,290	453	3,723	68%	51,866	1,286	1,076	51%	
1998	168,098	4,168	0.253	0	4,168	226	46%	18,982	471	3,581	69%	61,825	1,533	1,288	64%	
1999	201,217	4,989	0.302	0	4,989	269	50%	22,053	547	4,105	75%	61,869	1,534	1,282	63%	
2000	239,444	5,937	0.358	0	5,937	320	57%	23,143	574	4,305	78%	71,628	1,776	1,484	68%	
2001	219,428	5,440	0.328	0	5,440	292	52%	20,508	508	3,817	71%	67,396	1,671	1,401	68%	
2002	176,489	4,376	0.263	0	4,376	235	41%	19,978	495	3,716	70%	61,170	1,517	1,260	63%	
2003	177,757	4,407	0.269	0	4,407	240	44%	19,698	488	3,664	69%	55,272	1,370	1,134	55%	
2004	164,045	4,067	0.244	0	4,067	218	38%	19,204	476	3,572	65%	52,780	1,309	1,076	53%	
2005	202,273	5,015	0.300	0	5,015	268	50%	22,598	560	4,203	77%	65,423	1,622	1,327	68%	
2006	192,896	4,783	0.286	0	4,783	255	48%	23,683	587	4,405	79%	72,419	1,796	1,459	72%	
2007	201,119	4,986	0.297	0	4,986	265	46%	22,166	550	4,123	75%	68,417	1,696	1,370	67%	
2008	195,691	4,852	0.290	0	4,852	259	46%	19,168	475	3,123	64%	62,455	1,548	1,219	61%	
2009	192,745	4,779	0.286	0	4,779	255	50%	23,264	577	3,427	82%	61,727	1,530	1,181	64%	
2010	170,049	4,216	0.251	0	4,216	224	48%	19,137	474	2,835	72%	55,208	1,369	1,062	59%	
2011	147,231	3,650	0.217	0	3,650	194	41%	18,417	457	2,704	67%	51,973	1,289	1,000	55%	
2012	246,431	6,110	0.363	0	6,110	324	63%	22,681	562	3,211	81%	74,073	1,837	1,415	75%	
2013	156,730	3,886	0.231	0	3,886	206	38%	20,783	515	2,895	68%	58,920	1,461	1,128	59%	
2014	269,944	6,693	0.396	0	6,693	353	76%	23,644	586	3,291	86%	72,835	1,806	1,399	80%	
2015	161,067	3,993		0	3,993			20,224	501			72,619	1,800			
2016					5,114	269			559	3,025			1,609	1,236		
2017					5,125	269			570	3,025			1,613	1,236		
2018					5,136	269			581	3,025			1,616	1,236		
2019					5,148	269			592	3,025			1,619	1,236		
2020					5,159	269			603	3,025			1,622	1,236		
2025					5,216	269			663	3,025			1,639	1,236		
2030					5,274	269			728	3,025			1,655	1,236		
2035					5,333	269			800	3,025			1,672	1,236		
2040					5,392	269			879	3,025			1,688	1,236		

Note: GPD/Service is estimated as the average of the last 5 years for given customer class.

California Water Service Company - Los Altos Suburban District
Water Supply and Demand Analysis and Projections

Estimated Indoor/Outdoor Water Usage

Year	Industrial (IND)				Government (GOV)			
	IND Jan Usage	IND Indoor Use (Annualized 90% of January Total)			GOV Jan Usage	GOV Indoor Use (Annualized 90% of January Total)		
	(CCF)	AFY	GPD/Serv	%	(CCF)	AFY	GPD/Serv	%
1980	16,872	418	9,278	61%	6,639	165	918	22%
1981	20,697	513	11,772	75%	9,431	234	1,295	30%
1982	18,900	469	11,840	80%	4,713	117	627	17%
1983	16,394	406	10,294	62%	6,142	152	805	21%
1984	16,747	415	10,956	74%	6,996	173	922	20%
1985	14,528	360	10,155	71%	8,315	206	1,090	24%
1986	11,812	293	8,691	74%	7,673	190	1,001	23%
1987	7,974	198	6,086	58%	10,997	273	1,421	31%
1988	5,527	137	4,218	47%	5,254	130	674	16%
1989	5,117	127	3,906	54%	10,329	256	1,306	45%
1990	6,952	172	5,937	68%	9,880	245	1,246	41%
1991	4,867	121	6,840	134%	5,628	140	720	28%
1992	1,016	25	2,029	53%	6,604	164	847	28%
1993	666	17	1,340	29%	5,140	127	665	22%
1994	637	16	1,376	34%	4,999	124	637	22%
1995	745	18	1,649	43%	5,240	130	655	20%
1996	582	14	1,393	35%	4,622	115	574	19%
1997	1,406	35	3,811	72%	4,958	123	616	18%
1998	554	14	1,533	34%	8,599	213	976	36%
1999	541	13	1,497	30%	6,924	172	783	26%
2000	1,064	26	3,405	54%	11,356	282	1,258	44%
2001	751	19	2,375	44%	12,840	318	1,402	42%
2002	128	3	405	10%	4,404	109	480	16%
2003	543	13	1,738	34%	6,171	153	667	26%
2004	429	11	1,357	34%	5,056	125	537	20%
2005	528	13	1,670	38%	6,669	165	700	26%
2006	873	22	2,794	55%	6,110	151	635	25%
2007	814	20	2,637	56%	6,984	173	888	25%
2008	989	25	4,104	74%	8,571	213	1,023	29%
2009	480	12	2,125	42%	6,306	156	717	25%
2010	709	18	3,139	81%	5,234	130	586	26%
2011	334	8	1,674	41%	8,994	223	991	44%
2012	770	19	4,261	109%	8,943	222	975	43%
2013	115	3	636	19%	4,751	118	517	21%
2014	131	3	725	18%	10,973	272	1,194	52%
2015	362	9			4,959	123		
2016		0	1,824			210	919	
2017		0	1,824			212	919	
2018		0	1,824			214	919	
2019		0	1,824			215	919	
2020		8	1,824			217	919	
2025		8	1,824			226	919	
2030		8	1,824			235	919	
2035		8	1,824			245	919	
2040		8	1,824			255	919	

Estimated Indoor/Outdoor Usage			
Est. Indoor Usage	Est. Outdoor Usage	Est. Indoor Usage	Est. Outdoor Usage
AFY	AFY	%	%
5,575	6,981	44%	56%
6,356	6,506	49%	51%
5,377	6,826	44%	56%
6,087	6,909	47%	53%
6,194	8,387	42%	58%
6,380	8,240	44%	56%
6,511	8,199	44%	56%
7,258	7,729	48%	52%
6,345	8,408	43%	57%
6,869	5,702	55%	45%
6,968	4,793	59%	41%
6,405	3,877	62%	38%
5,751	5,811	50%	50%
5,288	7,538	41%	59%
6,130	6,681	48%	52%
5,729	6,759	46%	54%
6,386	6,933	48%	52%
5,932	8,548	41%	59%
6,398	6,712	49%	51%
7,255	7,023	51%	49%
8,594	6,517	57%	43%
7,957	7,239	52%	48%
6,500	8,604	43%	57%
6,432	8,306	44%	56%
5,988	9,910	38%	62%
7,376	7,382	50%	50%
7,338	7,179	51%	49%
7,426	8,025	48%	52%
7,113	8,377	46%	54%
7,054	7,037	50%	50%
6,207	5,441	53%	47%
5,627	5,731	50%	50%
8,750	4,029	68%	32%
5,983	9,210	39%	61%
9,360	3,752	71%	29%
6,427	3,761	63%	37%
7,493	7,004	52%	48%
7,520	7,027	52%	48%
7,547	7,050	52%	48%
7,574	7,073	52%	48%
7,610	7,089	52%	48%
7,752	7,208	52%	48%
7,901	7,333	52%	48%
8,057	7,463	52%	48%
8,222	7,598	52%	48%

PAGE LEFT BLANK INTENTIONALLY